

Islands 2050:

The Future of the Trust Area

Policy Statement Amendment Project



Islands Trust Policy Statement
Amendment Draft V1.0

Presentation to
Trust Programs Committee

May 3, 2021

Acknowledgment

We respectfully and humbly acknowledge...

The Islands Trust Area is located within the treaty lands and territories of the BOKÉĆEN, K'ómoks, Ləkʷəŋən, Lyackson, MÁLEXEŁ, Qualicum, Quw'utsun Tribes, scəwáθən məsteyəxʷ, Scia'new, səlilwətaʔt, SEMYOME, shíshálh, Sḵwḵwú7mesh, Snaw-naw-as, Snuneymuxw, Spune'luxutth, SḶÁUTW, Stz'uminus, ʔaʔəmen, toq qaymıxʷ, Ts'uubaa-asatx, Wei Wai Kum, We Wai Kai, WJOLEŁP, WSIKEM, Xeláltxw, Xwémalhkwu/ʔop qaymıxʷ, and xʷməθkʷəy̓əm.

...these lands and waters have been home to Indigenous Peoples since time immemorial

...we honour the rich history, stewardship and cultural heritage of this place

Islands 2050: Amendment Draft V1.0

Presentation Overview



Part 1: Rationale for Amendments

- Project Timeline and Scope
- The Policy Statement and the Islands Trust Object
- What We Heard: Principles and Paradigms
- Questions/Comments

Part 2: Detailed Review

- What We Heard: Policy Goals
- Spotlight on Key Amendments
- Implementation Considerations
- Questions/Comments

Part 3: Next Steps

- Discussion Question for Trust Programs Committee (TPC): Does Trust Programs Committee feel that this document fulfills Trust Council's direction to update the Policy Statement?
- Option to Send Written Feedback to Staff/Dilani Hippola by May 9 for inclusion in the May 14 TPC Agenda Package

Islands 2050: The Path FORWARD



May 2021 Committee Consultations:

- **May 3** Trust Programs Committee (First Review)
- May 5 Executive Committee (First Review)
- May 12 Regional Planning Committee
- **May 14** Trust Programs Committee (Second Review)
- May 18 Deadline for Staff to Incorporate Feedback
- May 25 Islands Trust Conservancy Board
- **May 26** Executive Committee (Second Review)
- June Trust Council (First Reading)

Estimated Project Timeline:

- **Late June** Send Draft for Referrals (90 days)
- **Mid-Sept** Engagement Phase III
- **Oct-Nov** Staff Incorporate Feedback
- **Dec 2021** Second Reading
- **Mar 2022** Third Reading
- **Fall 2022** Fourth Reading/Adoption

*engagement with First Nations is ongoing

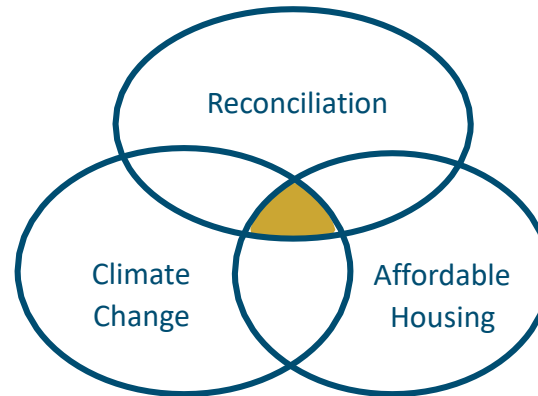
Islands 2050:

Policy Statement Amendment Project Scope

Trust Council 2018-2022 Three Strategic Priorities for Policy Statement Amendments

General Update of:

- Introduction
- Part I (Purpose & Implementation)
- Part II (Trust Object & Guiding Principles)
- Schedule 1 (Definitions)



Thematic Update of:

- Part III (Ecosystem Preservation and Protection)
- Part IV (Stewardship of Resources)
- Part V (Sustainable Communities)

Any input that is out of scope for this project can be considered by Trust Council for future Policy Statement amendment projects.

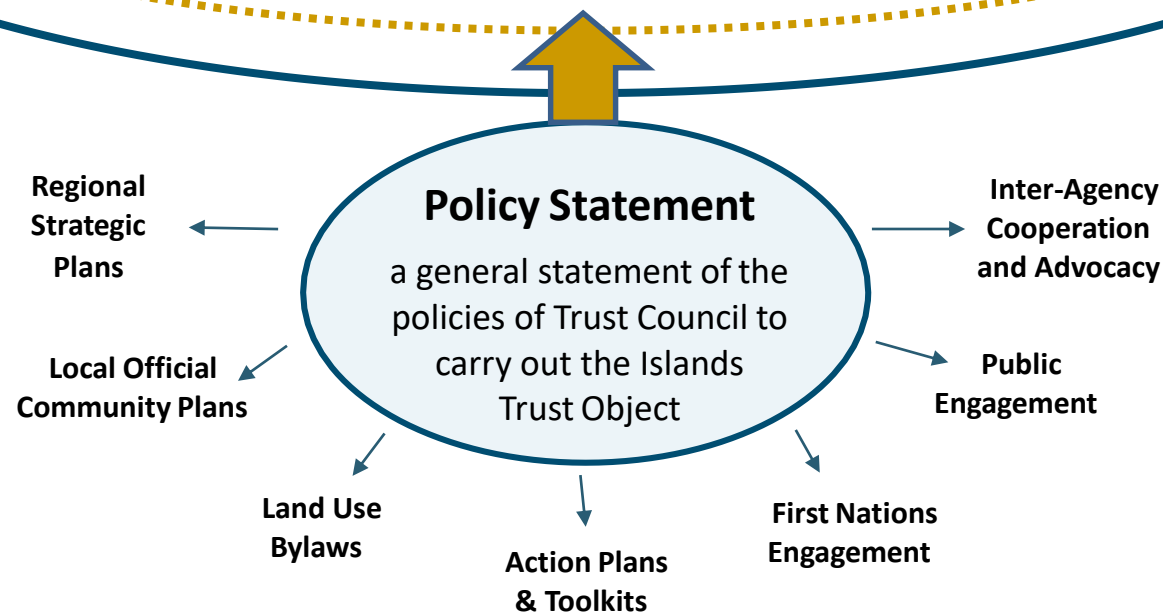
The ISLANDS TRUST Object

A Unique Mandate to Preserve & Protect

Islands Trust Act

Islands Trust Object:

“to preserve and protect the Trust Area and its unique amenities and environment for the benefit of the residents of the Trust Area and of British Columbia generally, in cooperation with municipalities, regional districts, improvement districts, other persons and organizations and the government of British Columbia.”



The ISLANDS TRUST object

A Unique Mandate to Preserve & Protect

DO WHAT?

To preserve and protect the Trust Area and its unique amenities and environment...

- Environmental Integrity
- Natural, Cultural, and Community Heritage
- Rural Island Atmosphere

FOR WHOM?

...for the benefit of the residents of the Trust Area and of British Columbia generally...

- Sustainable, Inclusive, and Resilient Trust Area Communities
- First Nations
- British Columbians

HOW?

...in cooperation with municipalities, regional districts, improvement districts, other persons and organizations, the government of British Columbia.

- Place Protection Planning:
 - Conservation-Oriented Land Use Planning
 - Public Engagement and Education
 - First Nations Engagement
 - Inter-Agency Coordination and Advocacy

PRINCIPLES & PARADIGMS

Underpinning Amendments to the Policy Statement

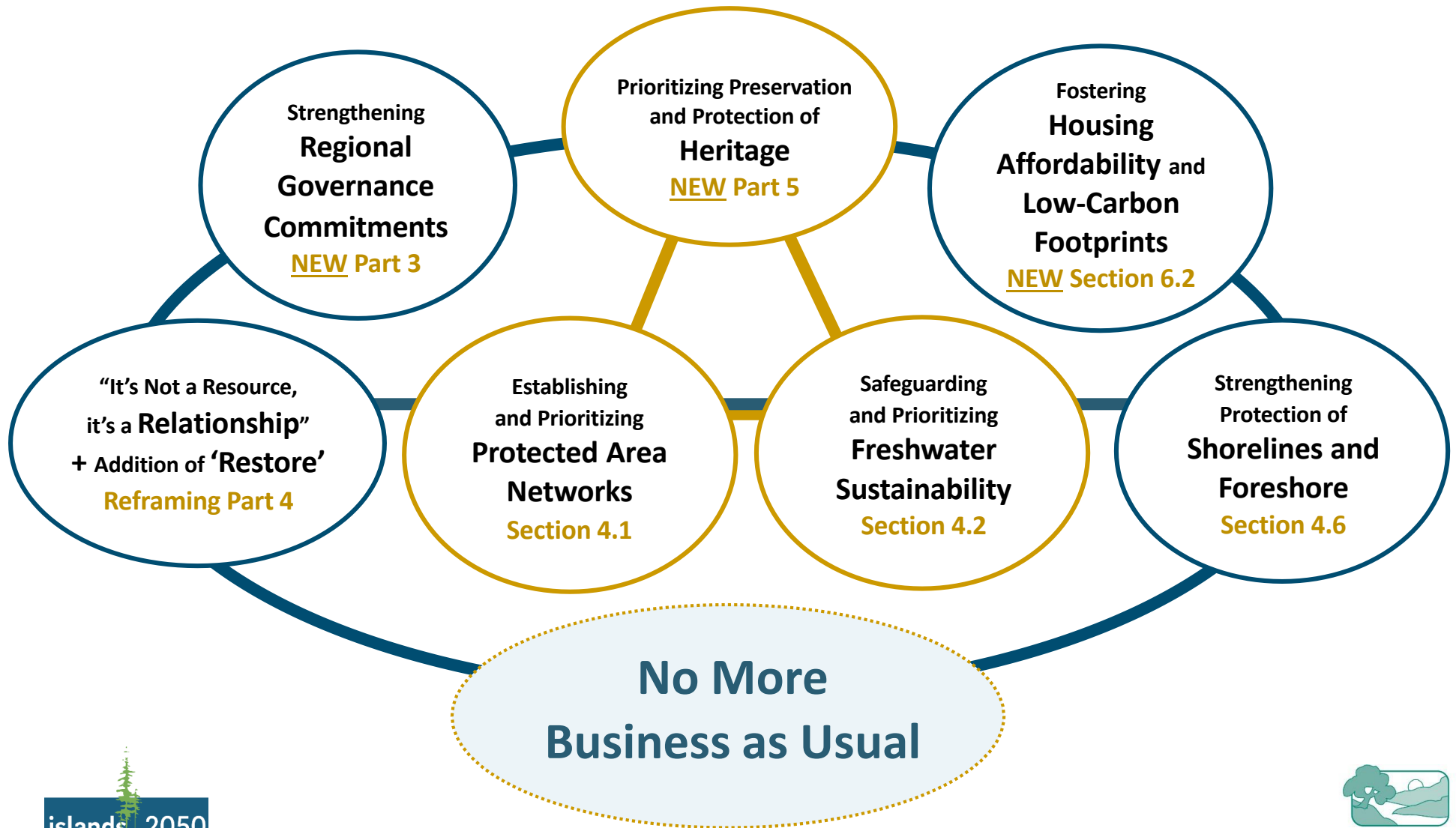


Questions?



Policy Goals

Underpinning Amendments to the Policy Statement



Strengthening
Regional
Governance
Commitments
NEW Part 3

New Part 3 Goal:

To foster regional governance approaches that uphold the Islands Trust Object and honour regional commitments to reconciliation and climate action.

Spotlight on 3.1.2:

Trust Council commits to place priority on preserving and protecting **the integrity of the environment** and **Indigenous cultural heritage** in all decision-making.

Current Policy Statement (Guiding Principle #2):

When making decisions and exercising judgment, Trust Council will place priority on preserving and protecting the integrity of the environment and **amenities** in the Trust Area.

Part 3 Policy Amendments:

- transformed guiding principles into regional governance policies
- defined clearer priorities/limitations and stronger leadership role
- noted regional approaches to reconciliation and climate action
- addition of “restoration”; removal of “resources”
- commitment to seek evidence-based understandings
- commitment to engagement with First Nations and foundation documents
- commitment to coordination and advocacy role
- translated into appropriate directive policies for consistency

Prioritizing Preservation
and Protection of
Heritage
NEW Part 5



New Part 5 Goal:

To preserve and protect natural, cultural, and community heritage in the Trust Area.

Trust Council recognizes heritage as a ‘unique amenity’ of the Trust Area that is to be preserved and protected under the Islands Trust Object. The relationship of First Nations to these lands, waters, and place is intrinsically linked to the preservation and protection of the Trust Area. First Nations have an inherent right to identify their own cultural heritage, interpret its meaning, and safeguard its value.

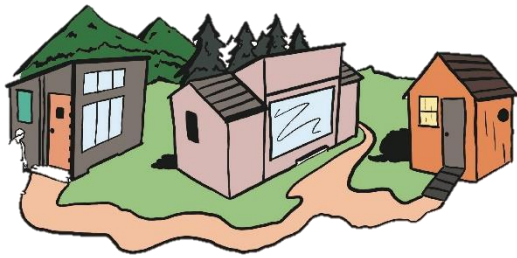
Spotlight on 5.1.1

Trust Council holds that the preservation, protection, and restoration of natural, cultural, and community heritage in the Trust Area is essential to the Islands Trust Object and must be guided by meaningful, respectful, and culturally sensitive engagement with First Nations.

Spotlight on 5.1.2

It is Trust Council’s policy that local and regional planning decisions should not incur adverse impacts to the natural heritage, Indigenous cultural heritage, or community heritage in the Trust Area.

Fostering
Housing
Affordability and
Low-Carbon
Footprints
NEW Section 6.2



New Part 6.2: Housing Policies

Spotlight on 6.2.1

Trust Council holds that community sustainability and resilience are supported by the availability of diverse housing options that cater to a range of age groups and income levels, and that respect the environmental integrity, Indigenous cultural heritage, and carrying capacity of islands in the Trust Area.

Spotlight on 6.2.2

Trust Council holds that where residential development must occur, it should be compact, energy-efficient, and appropriately situated in order to minimize greenhouse gas emissions, safeguard protected area networks, sustainably steward groundwater regions, and preserve and protect Indigenous cultural heritage in the Trust Area.

Section 6.2 Policies Address:

- constraints for all development
- the no-compromise zones: protected area networks, groundwater regions, Indigenous cultural heritage
- appropriate locations for density increases for affordable housing
- short-term rentals impact analysis
- floor area and lot coverage limits
- advocacy for safe, secure, affordable housing for Trust Area residents and for Indigenous Peoples in the Trust Area

Establishing
and Prioritizing
Protected Area
Networks
Section 4.1



Protected Area Networks

Spotlight on 4.1.3

Trust Council commits to establishing a network of protected areas throughout the Trust Area, acknowledging that unfragmented connectivity is necessary to preserve ecosystems in their natural state and in sufficient size and distribution to sustain their environmental integrity.

How? Spatial Decision Support System

The Islands Trust Conservancy uses a **Spatial Decision Support System (SDSS)** for conservation planning. An SDSS combines spatial data, scientific knowledge, and institutional values to provide maps and associated information that can help to establish networks of protected areas for each planning area. The SDSS balances knowledge of the natural environment with information about the built environment and incorporates the following information into decision making:

- Sensitive Ecosystem Mapping
- Terrestrial Ecosystem Mapping
- Mapped at-risk Ecological Communities
- Roads
- Property Boundaries
- Protected Areas
- Ecosystem Mapping (for disturbance mapping)
- Subdivision Potential
- Housing Density

Safeguarding
and Prioritizing
Freshwater
Sustainability
Section 4.2

Freshwater Sustainability

Spotlight on 4.2.1

Trust Council commits to take a precautionary and strategic approach to the stewardship of watershed ecosystems, freshwater networks, and groundwater recharge areas in the Trust Area, in cooperation with First Nations, Indigenous Knowledge Holders, other government agencies, the public, and on the basis of the best available science.

Spotlight on 4.2.6

Local trust committees and island municipalities shall, in their official community plans and regulatory bylaws, ensure:

- that freshwater quality is maintained;
- that neither the density nor intensity of land use is increased in **groundwater regions** where the quality or quantity of the supply of freshwater **is likely to be inadequate or unsustainable**;
- that existing, anticipated, and seasonal water **demand and supply projections** are considered and allowed for; and
- that islands are **self-sufficient in their supply of freshwater**.

Current Policy Statement (Guiding Principle #2):

- “in areas...”
- “known to have a problem with...”
- “existing, anticipated, and seasonal demands for water...”

Strengthening
Protection of
**Shorelines and
Foreshore**
Section 4.6

Coastal and Marine Stewardship

Spotlight on 4.6.2

It is Trust Council's policy that coastal and marine harvesting and aquaculture in the Trust Area should be small-scale, sustainable, regenerative, supportive of climate action, respectful of Indigenous harvesting areas, and protective of the environmental integrity of the Trust Area.

Spotlight on 4.6.7

It is Trust Council's policy that the following restrictions are necessary in order to preserve and protect the sensitive coastal and marine waters of the Trust Area:

- artificial reefs should not be developed (excepting 'reef balls')
- finfish farms should not be permitted
- seawalls and other hard shoreline armouring should not be developed
- private docks should be limited to boat access only properties
- freighter anchorage sites in the Southern Gulf Islands should be eliminated
- oil tankers should not be permitted to transit through Trust Area waters

Section 4.6 Policies Address:

- protection of seagrass meadows and kelp beds, acknowledging multifaceted roles in carbon capture and storage, soft shoreline protection, and provision of habitats and spawning areas
- protection of First Nations inherent rights and access to coastal and marine harvesting sites and Indigenous cultural heritage on shorelines
- Trust Council's coastal and marine coordination and advocacy role

The Path FORWARD

Implementation Considerations

No More Business As Usual = Organizational Change

- Amendments to Policy Statement Implementation Policy
- Amendments to Policy Statement Directives Checklist
- Coordination & Advocacy Role
- Educational Materials
- Action Plans and Tool Kits
- Links to Strategic Plans and Budget
- Links to Regional Planning Team and Official Community Plan Review
- Funding Requests to Province
- Funding & Partnerships for Research, Monitoring, and Evaluation
- Specialist Expertise
- Working Relationships with Islands Trust Conservancy

Questions?

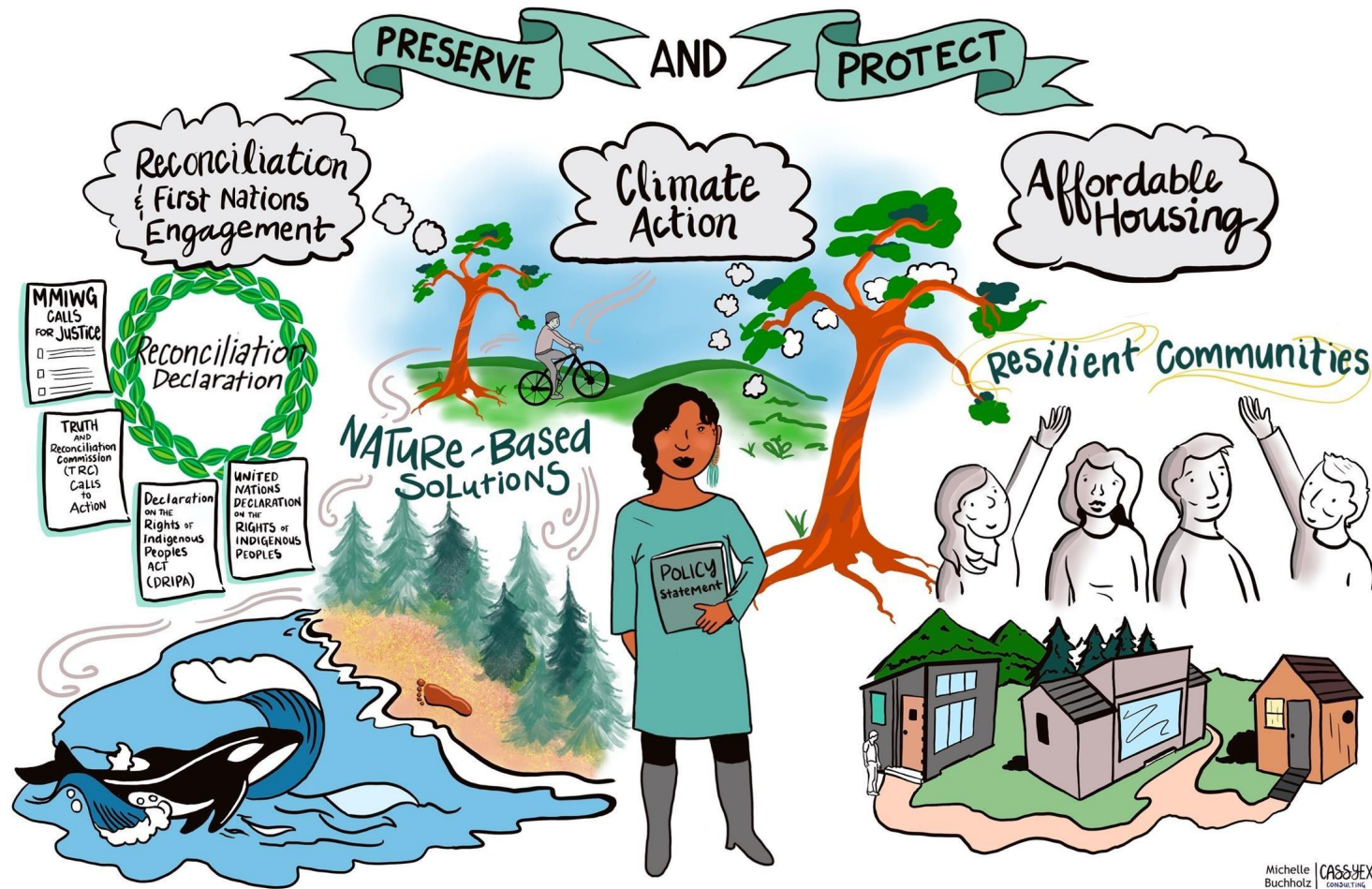


Discussion Question

for Trust Programs Committee (TPC):

Does Trust Programs Committee feel that this document fulfills Trust Council's direction to update the Policy Statement?





Send **written feedback** (optional) to Staff/Dilani Hippola by **May 9th** for inclusion in the May 14th Trust Programs Committee Agenda Package.