

**Explanatory Note:**

Released by Executive Committee resolution EC-IC-2025-13 on July 17, 2025.

Text changes in blue/purple ink are legal counsel recommendations.

Text changes in red, green and pink were previously requested by Committee of the Whole and Trust Programs Committee.



Islands Trust

# DRAFT FOR TRUST PROGRAMS COMMITTEE/TRUST COUNCIL

## Islands Trust Policy Statement

### Draft Bylaw No. 183

June 1, 2025

---

Proposed Revisions by Committee of the Whole/Trust Programs Committee made:

September 25, 2024	February 21, 2025
October 3, 2024	April 2, 2025 (TPC)
November 6, 2024	April 16, 2025 (TPC)
December 12, 2024	April 29, 2025 (TPC)
January 8, 2025	May 7, 2025 (TPC)
February 6, 2025	May 29, 2025 (TPC)

For Committee of the Whole meeting of July XX, 2025

# Acknowledgement

Islands Trust Council respectfully acknowledges that the lands and waters that encompass the Islands Trust Area have been home to Indigenous Peoples since time immemorial and that their relationship to these lands and waters continues to this day. Islands Trust Council acknowledges that residential schools, forced removal, and colonial laws and restrictions ~~of~~<sup>on</sup> Indigenous governance and cultural practices have displaced and dispossessed Coast Salish peoples and disrupted their relationships with the islands and waters of the Salish Sea. Islands Trust Council acknowledges that a healthy environment is essential for Indigenous Peoples to be able to exercise their inherent and treaty rights. Islands Trust Council is committed to reconciliation and to working together to preserve and protect this ecologically, culturally, and spiritually significant region in the Salish Sea.

The Islands Trust Area is located within Coast Salish Territory, in the treaty lands and territories of:

- BOKEĆEN (Pauquachin) First Nation
- Da'naɣda'xw/Awaetlala First Nation
- K'ómoks (Comox) First Nation
- Lhaq'temish (Lummi) Nation
- MÁLEXEL (Malahat) First Nation
- Mamalilikulla First Nation
- Qualicum First Nation
- Quw'utsun Nation (comprised of **Cowichan Tribes**, **Xelátxw** (Halalt) First Nation, **Lyackson** First Nation, **Spune'luxutth'** (Penelakut Tribe) and **Stz'uminus** (Chemainus) First Nation
- scəwəθən (Tsawwassen) First Nation
- səlilwətaɬ (Tsleil-Waututh) First Nation
- **SEMYOME** (Semiahmoo) First Nation
- shíshálh (Sechelt) Nation
- Sḵwxwú7mesh (Squamish) First Nation
- Snaw-naw-as (Nanoose) First Nation
- Snuneymuxw (Nanaimo) First Nation
- Songhees First Nation
- STÁUTW (Tsawout) First Nation
- taʔəmen (Tla'amin) First Nation
- Tlowitsis Nation
- Ts'uubaa-asatx (Lake Cowichan) First Nation
- Wei Wai Kum (Campbell River) First Nation
- We Wai Kai (Cape Mudge) First Nation
- W̱JOŁŁP (Tsartlip) First Nation
- W̱SIKEM (Tseycum) First Nation
- Xwémalhk̓wu (Homalco) First Nation
- Xwsepsum (Esquimalt) First Nation
- x̣ʷməθkʷəỵəm (Musqueam) First Nation

# Contents

<b>Acknowledgement</b>	<b>2</b>
<b>Part 1 – The Islands Trust Act</b>	<b>4</b>
1.1 – The Islands Trust Object	4
1.2 – Map of the Islands Trust Area	4
1.3 – Indigenous Inherent Rights Acknowledgment	5
1.4 – Purpose and Structure of the Policy Statement	5
<b>Part 2 – Guiding Principles and Priorities</b>	<b>6</b>
2.1 – Guiding Principles and Priorities	6
<del>2.2 – Coordination Principles</del> 2.2 – Reconciliation Principles	7
<del>2.3 – Coordination Principles</del> 2.3 – Reconciliation Principles	8
<b>Part 3 – Objectives, Goals, and Directive and Advisory Policies</b>	<b>9</b>
3.1 – <del>Objective Goal</del> 1: Advancing Advance Reconciliation	9
3.2 – <del>Objective Goal</del> 2: <del>Preserving-Preserve</del> and Protecting Indigenous Cultural Heritage and Culturally Significant Areas, Sites, and Species	10
3.3 – <del>Objective Goal</del> 3: <del>Preserving-Preserve</del> and Protecting Healthy and Biodiverse Ecosystems	11
3.4 – <del>Objective Goal</del> 4: Fostering Sustainable, Inclusive, and Resilient Communities	12
3.5 – <del>Objective Goal</del> 5: Fostering Sustainable Stewardship of Lands and Waters	15
<b>Part 4 – Implementation</b>	<b>18</b>
4.1 – Policy Statement Implementation	18
4.2 – Policy Statement Amendments	18
<b>Glossary</b>	<b>20</b>

## Part 1: The Islands Trust Act

In 1974, the Government of British Columbia established the *Islands Trust Act* to preserve and protect the Islands Trust Area and its unique amenities and environment against unrestrained growth and development. Islands Trust is a federated body responsible for protecting the Islands Trust Area and its unique amenities and environment. The Islands Trust Area is comprised of 13 major islands and more than 450 smaller islands and the surrounding waters in the southern Strait of Georgia and Howe Sound. Islands Trust regulates local land use, works with other levels of government, and, through the Islands Trust Conservancy, protects places of natural or cultural significance. The Act establishes Islands Trust as a special-purpose provincial government agency equipped with a suite of land-use planning powers and a conservation-oriented mandate to preserve and protect the region in cooperation with others. This unique governmental mandate was defined in Section 3 of the *Islands Trust Act* and is commonly referred to as the “Islands Trust Object.”

**Commented [YA1]:** Not a legal issue but consider deleting “southern” since Hornby and Denman are probably considered northern Strait of Georgia

**Commented [YA2]:** Suggest “is” not “was”

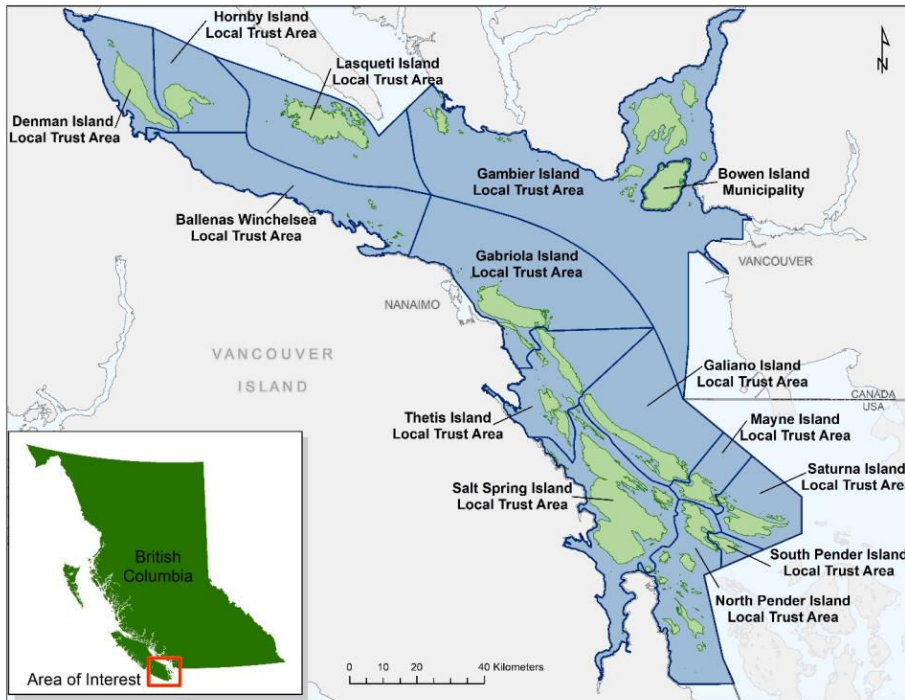
### 1.1 – The Islands Trust Object

“The object of the trust is to preserve and protect the Trust Area and its unique amenities and environment for the benefit of the residents of the Trust Area and of British Columbia generally, in cooperation with municipalities, regional districts, improvement districts, First Nations, other persons and organizations and the government of British Columbia.” (Section 3, *Islands Trust Act*)

### 1.2 – Map of the Islands Trust Area



This map is being replaced with the one below



**NOTE:** This map is a placeholder only. A new map of the Islands Trust Area will be created, identifying the boundaries of each local trust area and island municipality, and will include a legend, scale and recognition of the Indigenous Nations within whose territory Islands Trust operates

### 1.3 – Indigenous Inherent Rights Acknowledgment

Islands Trust Council respectfully acknowledges Indigenous inherent rights as protected under section 35 of the *Constitution Act, 1982*. Islands Trust Council respectfully acknowledges Indigenous rights to self-governance and the expressed interest of Indigenous Governing Bodies in working toward co-governance of the Islands Trust Area. Islands Trust Council is committed to advancing reconciliation with Indigenous Governing Bodies through ongoing discussion and recognition of these rights.

Given the *Declaration on the Rights of Indigenous Peoples Act* and the evolving legislative landscape in British Columbia, this bylaw the Policy Statement serves as a starting point for improved cooperation with Indigenous Governing Bodies. Islands Trust Council commits to an ongoing effort to co-develop planning and land use management processes with Indigenous Governing Bodies within the Islands Trust Area and acknowledges that this document does not serve as an endpoint. Islands Trust Council will be informed by the United Nations Declaration on the Rights of Indigenous Peoples as a framework for its approach to reconciliation.

## 1.4 – Purpose and Structure of the Policy Statement

### Communications, Engagement, and Referrals:

Section 15 of the *Islands Trust Act* states that Trust Council must adopt, by bylaw, ~~an Islands Trust Policy Statement~~ that applies to the Islands Trust Area as a whole. The *Islands Trust Act* specifies that the Policy Statement must be a general statement of the policies of Trust Council to carry out the Islands Trust Object, that it may establish different policies for different parts of the Islands Trust Area, and that it must be approved by the provincial Minister responsible for Islands Trust prior to adoption.

**Commented [YA3]:** s. 15 just calls it “trust policy statement” not “islands trust policy statement”, and the rest of this policy calls it the “policy statement”.

~~The~~ Islands Trust Council is responsible for establishing and amending the Policy Statement, which in turn guides the development of more specific official community plans and regulatory bylaws by local trust committees and island municipalities across the region. The Act stipulates that official community plans and bylaws required to be submitted to Executive Committee or Trust Council under the Act must not be approved if they are contrary to or at variance with the Policy Statement. This ensures that the Islands Trust Object is at the core of all planning and land use management decision-making in the Islands Trust Area.

**Commented [YA4]:** Minor suggested changes for consistency with statute

The Policy Statement represents Trust Council’s vision for the preservation and protection of the Islands Trust Area and its unique amenities and environment. It aspires to reflect the values and interests of island communities, Indigenous ~~government bodies~~ Governing Bodies and Indigenous Peoples, partner agencies, and all British Columbians, as well as the silent voices of island ecosystems, species at risk, and future generations.

### Three Types of Policies in the Policy Statement:

1. **Guiding Principles** ~~(as listed in Part 2 of the Policy Statement)~~ are intended to establish general commitments of Trust Council that centre the Islands Trust Object in all daily decision-making across the Islands Trust Area by ~~Islands Trust bodies~~ Islands Trust Council, Islands Trust Executive Committee, local trust committees and island municipalities that are bound by the Policy Statement.
2. **Directive Policies** ~~(as listed in Part 3 of the Policy Statement)~~ are ~~policies that are integral to carrying out the Islands Trust Object. They are policies with which official community plans and regulatory bylaws of a local trust committee or an island municipality should be consistent to avoid rejection or objection when presented by the local trust committee or island municipality for approval or consideration by the Executive Committee or Trust Council. They are also policies that should be directly addressed, where and implemented to the extent possible, in all official community plans and bylaws of a local trust committees and island municipalities. and that:~~
  - Local trust committees must address in the development of official community plans and/or regulatory bylaws, and amendments to those documents where relevant; and
  - Island municipalities must address in the development of an official community plan, and amendments to that document where relevant; and
  - Bowen Island Municipality should address in the development of regulatory bylaws, and amendments to those bylaws where relevant.

~~These are policies integral to carrying out the Islands Trust object.~~

3. **Advisory Policies** ~~(as listed in Part 3 of the Policy Statement)~~ are policies expressing select ~~goals-objectives~~ of Trust Council, that local trust committees and island municipalities are advised to ~~address-consider~~ in the development of official community plans, bylaws, and in discretionary land use decisions. Advisory policies are not intended to constitute a basis for Executive Committee or Trust Council review of local trust committee or island municipality bylaws, or for potential rejection of such bylaws.

~~All of the policies contained within the Policy Statement are interconnected and interrelate to each other in multiple ways. Therefore, the document should always be considered in its entirety to interpret its intended meaning and vision.~~

~~The policies in Part 3 have been included as they are considered by Trust Council to be important for preservation and protection of the Trust Area and its unique amenities and environment.~~

**Commented [YA5]:** Suggested revision to address distinction between review and approval requirements under ITA versus referral requirements under Bowen Island letters patent. Suggested language just focuses not on how the directive policies should be used in respect of any bylaw being reviewed for approval, or referred.

**Commented [YA6]:** The general rule of statutory interpretation is to read the document as a whole, so no need to say that here. In our view the “whole document” approach does not prevent a “contrary to or at variance with” finding based solely on one specific directive policy.

## Part 2: Guiding Principles

~~In its decision making, Trust Council shall be guided by the following guiding principles:~~

### 2.1 – General Guiding Principles

In its efforts to carry out the Islands Trust Object, ~~Islands~~ Trust Council commits to the following set of shared principles ~~and priorities~~ to guide daily planning and decision making by ~~all bodies across the Islands Trust Area~~ Islands Trust Council, Islands Trust Executive Committee, local trust committees and island municipalities:

~~Trust Council commits to be guided by the following principles in its efforts to advance the Islands Trust Object:~~

#### Guiding Principles ~~and Priorities~~:

2.1.1	<b>Acknowledge and Respect Indigenous Rights</b> To grow understanding of the history and legacy of colonialism in the Islands Trust Area, to acknowledge and respect the rights of Indigenous Peoples, and to work together with Indigenous Governing Bodies and Indigenous Knowledge Holders to preserve and protect culturally significant areas, sites, and species.
2.1.2	<b>Prioritize Environmental and Indigenous Cultural Heritage Protection</b> To place priority on preserving, protecting and restoring the environment, and preserving, protecting, and supporting restoration of Indigenous cultural heritage in all decision making.
2.1.3	<b>Limit the Rate and Scale of Development</b> To define and maintain appropriate limits for the rate and scale of development in order to preserve and protect the Trust Area and its unique amenities and environment.
2.1.4	<b>Foster Sustainable, Inclusive, and Resilient Communities</b> To support planning and land use management decisions that foster sustainable, inclusive, and resilient communities, acknowledging the interdependencies between healthy communities and healthy ecosystems.
2.1.5	<b>Take Guidance From the Precautionary Principle</b> To be guided by the precautionary principle in all decision making to safeguard the environment and cultural heritage where there may be uncertainty over the threats of serious or irreversible damage from development.
2.1.6	<b>Account for Cumulative Effects</b> To strive to account for the cumulative effects of existing and proposed development to avoid detrimental effects on watersheds, groundwater supplies, culturally sensitive areas and cultural heritage sites, and <del>Islands Trust Area</del> species and their habitats.
2.1.7	<b>Foster Informed and Balanced Decision Making</b> To be informed by a broad range of sources in its decision-making processes, including <u>Indigenous Knowledge, institutional knowledge, the best available science, Indigenous Knowledge, and local community knowledge, and science.</u>

### 2.2 – Reconciliation Principles

Islands Trust Council has declared its commitment to reconciliation with Indigenous Peoples of the Islands Trust Area, with the understanding that this commitment is a long-term relationship-building process and is a commitment to be informed by these reconciliation principles to the extent that they engage the object of the trust.

#### Trust Council's Reconciliation Principles

~~Trust Council will, to the extent that they engage its mandate to preserve and protect the Trust Area,~~

**Commented [YA7]:** Not critical and not legally significant but suggesting this language here instead of in the table, only for consistent structure – the other tables in this section have preamble language above, but not embedded within, the table.

<b>2.2.1</b>	<b>Guidance from Truth and Reconciliation Commission</b> Be informed by the 10 principles established by the Truth and Reconciliation Commission of Canada (TRC).
<b>2.2.2</b>	<b>Guidance from United Nations Declaration on the Rights of Indigenous Peoples</b> Be informed by the articles established in the United Nations Declaration on the Rights of Indigenous Peoples (UNDRIP).
<b>2.2.3</b>	<b>Guidance from Missing and Murdered Indigenous Women and Girls Calls for Justice</b> Be informed by the principles for change used by the National Inquiry into Missing and Murdered Indigenous Women and Girls.
<b>2.2.4</b>	<b>Guidance from Indigenous Governing Bodies</b> Be informed by guidance from Indigenous Governing Bodies and Indigenous Knowledge Holders.

## 2.2.3 – Cooperation Principles

While Trust Council must provide the necessary leadership to carry out the Islands Trust Object, its mandate requires cooperation with partners who each have unique roles to play in preserving and protecting the region.

Trust Council commits to be guided by the following principles in its cooperation efforts to advance the Islands Trust Object:

Trust Council's Cooperation Principles	
<b>2.23.1</b>	<b>Collaborate with the Islands Trust Conservancy Board</b> To collaborate closely with, and be informed by, the Islands Trust Conservancy Board, particularly in the areas of science-based conservation planning, ecosystem mapping, identification of core conservation areas and protected area networks, and protection of species and ecosystems at risk.
<b>2.3.2</b>	<b>Collaborate with Island Municipalities</b> To collaborate with island municipalities, particularly in the areas of conservation planning, communications and engagement, the Policy Statement, and other areas supporting the Islands Trust Object.
<b>2.23.3</b> <b>2</b>	<b>Work Towards Collaborative Governance with Indigenous Governing Bodies</b> To work towards building strong relationships and foundations for collaborative governance with Indigenous Governing Bodies, including through the development of shared decision-making agreements under the <i>Declaration on the Rights of Indigenous Peoples Act</i> .
<b>2.23.4</b> <b>3</b>	<b>Work Towards Strategic Inter-Agency Coordination</b> To work towards establishing effective inter-agency coordination mechanisms with different levels of government, academic institutions and organizations who have important roles to play in supporting the Islands Trust Object.
<b>2.23.5</b> <b>4</b>	<b>Work Towards Accessible and Inclusive Public Communications and Engagement</b> To work towards accessible and inclusive public communications and engagement strategies that engage a wide range of <del>Islands Trust Area</del> residents, communities, local organizations, and British Columbians.
<b>2.23.6</b> <b>5</b>	<b>Provide Public Education Opportunities</b> To provide education opportunities to <del>Islands Trust Area</del> residents, communities, local organizations, and visitors, highlighting tangible ways they can contribute to preserving and protecting the Trust Area and its unique amenities and environment, while respecting the confidentiality interests of Indigenous <del>Peoples Knowledge Holders</del> and Indigenous Governing Bodies.

## 2.3 – Reconciliation Principles

~~Trust Council has declared its commitment to reconciliation with Indigenous Peoples of the Islands Trust Area, with the understanding that this commitment is a long-term relationship building and healing process.~~

**~~Trust Council's Reconciliation Principles:~~**

~~Trust Council will, to the extent that they engage its mandate to preserve and protect the Trust Area,~~

<b><del>2.3.1</del></b>	<b><del>Guidance from Truth and Reconciliation Commission</del></b> <del>Be informed by the 10 principles established by the Truth and Reconciliation Commission of Canada (TRC).</del>
<b><del>2.3.2</del></b>	<b><del>Guidance from United Nations Declaration on the Rights of Indigenous Peoples</del></b> <del>Be informed by the articles established in the United Nations Declaration on the Rights of Indigenous Peoples (UNDRIP).</del>
<b><del>2.3.3</del></b>	<b><del>Guidance from Missing and Murdered Indigenous Women and Girls Calls for Justice</del></b> <del>Be informed by the principles for change used by the National Inquiry into Missing and Murdered Indigenous Women and Girls.</del>

# Part 3: Objectives, Goals, and Directives and Advisory Policies

## Objective Goal 1: Advancing Reconciliation

Islands Trust Council is committed to reconciliation and to long-term healing and relationship building with Indigenous Governing Bodies and Indigenous Peoples across the region. The policies in this section aim to acknowledge the history and legacy of Indigenous Peoples in the area since time immemorial, to recognize and respect the interests of Indigenous Governing Bodies regarding planning and land use management decisions that impact their territories, and to build foundations for collaborative governance and shared decision making.

### Directive Policies - Reconciliation

Local trust committees and island municipalities shall, in all the preparation of official community plans, bylaws, and other bylaws that require Executive Committee or Trust Council review or approval, and  
Local trust committees shall, in the preparation of regulatory bylaws and amendments . . .

3.1.1	<b>Cooperate with Indigenous Governing Bodies</b> Engage with Indigenous Governing Bodies and provide a record of the engagement at time of bylaw submission.
-------	--

**Commented [YA8]:** See comment at 1.4, above. This revision is suggested to acknowledge the fact that the Bowen Letters patent require referral of certain bylaws not addressed in the ITA.

### Advisory Policies - Reconciliation

Local trust committees and island municipalities should . . .

3.1.2	<b>Cooperate with Indigenous Governing Bodies</b> Engage with Indigenous Governing Bodies on discretionary planning and land use management decisions that may have potential significant impacts on Indigenous Governing Bodies' territories or the ecological health of the Islands Trust Area.
3.1.3	<b>Land Back</b> Through engagement with Indigenous Governing Bodies, support opportunities to direct land to Indigenous Governing Bodies as an amenity contribution in applications seeking additional development potential.
3.1.4	<b>Respect Indigenous Protocols for Information and Data Provided</b> Respect Indigenous Governing Bodies' and Indigenous Knowledge Holders' protocols about how their data and information should be collected, protected, used and shared.

## Objective-Goal 2:

### Preserving-Preserve and Protecting Indigenous Cultural Heritage and Culturally Significant Areas, Sites, and Species

This objective advances Guiding Principle 2.1.2 (Prioritize Environmental and Indigenous Cultural Heritage Protection). Islands Trust Council recognizes Indigenous cultural heritage as a unique amenity in the Islands Trust Area that must be preserved, protected, and where possible, restored. The Islands Trust Area is home to many culturally significant areas, sites, and species of importance to present and future generations of Indigenous Peoples. This section lays out general types of Indigenous cultural heritage and culturally significant areas, sites, and species that should be identified and protected in each local planning area; this should be guided by Indigenous Peoples, Indigenous Governing Bodies and Indigenous Knowledge Holders and undertaken in a culturally sensitive manner that respects confidentiality protocols around the sharing of Indigenous Knowledge, and that many of these places are the resting places of ancestors.

#### Directive Policies - Indigenous Cultural Heritage & Culturally Significant Areas, Sites and Species

Local trust committees and island municipalities shall, in the preparation of official community plans and amendments; and

Local trust committees shall, in the preparation of regulatory bylaws and amendments . . .

3.2.1	<b>Indigenous Cultural Heritage Sites</b> Address-Minimize potential adverse impacts to Indigenous cultural heritage sites including, but not limited to, known-identified village sites, burial sites, camp sites, middens, cairns, petroglyphs, culturally modified trees, fish traps, clam gardens, and pictographs, and known (registered), unregistered, or newly-discovered archaeological sites.
3.2.2	<b>Indigenous Marine Harvesting Areas</b> Address-Minimize potential adverse impacts to known-Indigenousmarine harvesting areas used by Indigenous Peoples, on-land and marine foreshores including, but not limited to, fish weirs and clam gardens.
3.2.3	<b>Indigenous Harvesting and Hunting Areas</b> Minimize potential adverse impacts to land-based harvesting and hunting areas used by Indigenous Peoples.

#### Advisory Policies - Indigenous Cultural Heritage & Culturally Significant Areas, Sites and Species

Local trust committees and island municipalities should . . .

3.2.3	<b>Indigenous Cultural Heritage Sites</b> Through engagement with Indigenous Governing Bodies, identify and protect-prioritize protection of Indigenous cultural heritage sites including, but not limited to, village sites, burial sites, camp sites, middens, cairns, petroglyphs, culturally modified trees, fish traps, clam gardens, and pictographs, and known (registered), unregistered, or newly discovered archaeological sites.
3.2.4	<b>Indigenous Harvesting Areas</b> Through engagement with Indigenous Governing Bodies, identify and prioritize protection ofprotect Indigenous harvesting areas on land and marine foreshores including, but not limited to, fish weirs, clam gardens, camas meadows, and other areas used for Indigenous hunting, fishing, trapping, and gathering of plants and medicines.
3.2.5	<b>Indigenous Harvesting and Hunting Area Access</b> Through engagement with Indigenous Governing Bodies, identify and pursue opportunities to improve access by Indigenous Peoples to marine and land-based harvesting and hunting areas.

3.2.65	<b>Other Culturally Significant Areas for Indigenous Peoples</b> Through engagement with Indigenous Governing Bodies, identify and <u>prioritize protection of</u> <del>protect</del> areas of importance for Indigenous cultural <u>and</u> , spiritual, <del>medicinal and ceremonial</del> practices <u>and</u> gathering areas.
3.2.76	<b>Culturally Significant Species and Medicinal Plants</b> Through engagement with Indigenous Governing Bodies, identify <u>and</u> , <u>prioritize protection</u> , <del>protect</del> and support restoration of culturally significant species and medicinal plants <u>and</u> ochre.
3.2.8	<b>Cultural Monitors</b> Through engagement with Indigenous Governing Bodies, <u>support opportunities for cultural monitors to be present for ground-</u> <del>disturbing activities.</del>

## Objective Goal 3:

### Preserving ~~Preserve~~ and Protecting Healthy and Biodiverse Ecosystems

This objective advances Principle 2.1.2 [Prioritize Environmental Protection]. Islands Trust Council acknowledges that preserving and protecting the ecological integrity of the Islands Trust Area is essential to the Islands Trust Object and to supporting community well-being across the region. The policies in this section aim to identify and protect key ecosystem types and characteristics that safeguard biodiversity (~~excluding invasive species~~) and promote resilience to climate change.

#### Directive Policies - Ecosystem Integrity

Local trust committees and island municipalities shall, in the preparation of official community plans and amendments; and

Local trust committees shall, in the preparation of regulatory bylaws and amendments . . .

3.3.1	<b>Protected Area Networks</b> Identify, establish, and <del>maintain</del> <u>sustain</u> a network of protected areas of sufficient size and distribution to preserve the environmental integrity of ecosystems in their planning area.
3.3.2	<b>Sensitive Ecosystems</b> Identify and prioritize the preservation, protection, and restoration of sensitive ecosystems in the Islands Trust Area, classified as the following ecosystem types: cliff; freshwater; herbaceous; old and mature forest; riparian; wetland; and woodland.
3.3.3	<b>Forest Ecosystems</b> Identify forest ecosystems and prioritize the preservation, protection, and restoration of unfragmented forest <del>ecosystems</del> , <u>with a with a particular focus on the maintenance and restoration of their ecological integrity, remaining stands of relatively undisturbed Coastal Douglas-fir, Western redcedar, Arbutus, Garry oak, and Coastal Western Hemlock and their associated ecosystems.</u>
3.3.4	<b>Coastal Oak and Prairie Ecosystems</b> <u>Identify and prioritize the preservation and protection of coastal oak and prairie ecosystems, with a particular focus on their maintenance, restoration and management of their ecological integrity.</u>
3.3.5	<b>Watershed Ecosystems</b> Identify and prioritize the preservation, protection, and restoration of watershed ecosystems, freshwater sources, and groundwater recharge areas.
3.3.6	<b>Marine Shorelines and Nearshore Areas</b> Identify and prioritize the preservation, protection, and restoration of eelgrass meadows, kelp forests, forage fish spawning areas, clam beds, estuaries, tidal salt marshes, mud flats, and coastal wetlands.

3.3.7	<b>Critical Habitat for Species at Risk</b> Identify and prioritize the preservation, protection, and restoration of critical habitat for species at risk.
3.3.8	<b>Islets and Small Islands</b> Identify and prioritize the preservation, protection, and restoration of <del>relatively undisturbed</del> islets and small islands.
3.3.9	<b>Light Pollution</b> <del>Minimize light pollution through the application of dark sky principles.</del>

#### Advisory Policies - Ecosystem Integrity

##### Local trust committees and island municipalities should . . .

3.3.9	<b>Indigenous Ecosystem Management</b> <del>Through engagement with Indigenous Governing Bodies, support opportunities for Indigenous-led ecosystem management.</del>
3.3.10	<b>Indigenous Protected and Conserved Areas</b> <del>Support Indigenous Governing Bodies in the establishment of Indigenous Protected and Conserved Areas.</del>

## Objective-Goal 4:

### Fostering Sustainable, Inclusive, and Resilient Communities

~~This objective advances Principle 2.1.2 [Limit the Rate and Scale of Growth and Development], and Principle 2.1.4 [Foster Sustainable, Inclusive, and Resilient Communities].~~ Islands Trust Council recognizes that the Islands Trust Object is for the benefit of residents of the Islands Trust Area and all British Columbians, who in turn have a role in preserving and protecting this region. The policies in this section support the preservation and protection of unique island character and aim to foster sustainable, inclusive, and resilient island communities.

#### Directive Policies - Managing Growth and Development

Local trust committees and island municipalities shall, in the preparation of official community plans and amendments; and

Local trust committees shall, in the preparation of regulatory bylaws and amendments . . .

3.4.1	<b>Sustainable Development</b> <del>Consider site capabilities, environmental and protected areas, and existing development patterns when determining the land use designation and appropriate locations and intensities of various uses of the land. Ensure development is compact, energy-efficient, and appropriately situated on the island and on the site in order to:</del> <del>reduce dependency on private automobile use, and support increased use of trail systems, public transportation, and active transportation</del> <del>be compatible with preservation and protection of the Trust Area and its unique amenities and environment, and limit impacts on Indigenous cultural heritage, harvesting and hunting areas.</del>
3.4.2	<b>Growth Management</b> <del>Density Limits</del> <del>Establish appropriate density limits for efficient and sustainable use of the land base that help to safeguard protected area networks, and is compatible with preservation and protection of the Trust Area and its unique amenities and environment.</del> <del>Manage community growth and its associated impacts by directing residential, commercial and industrial development and mixed-use development into appropriate suitable locations, to prevent sprawl and, minimize fragmentation of forest lands, and avoid adverse impacts to Indigenous cultural heritage, harvesting and hunting areas, relieve growth pressures in the surrounding rural areas, and to help safeguard protected area networks.</del>

3.4.3	<b>Impacts of Development</b> Consider the aesthetic, environmental, and social impacts of development.
3.4.4	<b>Community Facilities and Services</b> Ensure that each community's <u>and local indigenous communities'</u> current and projected long-term needs for educational, institutional, community, health, cultural, <u>and</u> recreational facilities and services <u>and outdoor recreation</u> are considered and planned for.
3.4.5	<b>Climate Change Mitigation and Adaptation</b> <del>Identify and encourage adoption of</del> <u>Implement</u> planning and land use management strategies, and consider nature-based solutions, to minimize greenhouse gas emissions, and adapt to climate change-related vulnerabilities.
3.4.6	<b>Hazardous Areas</b> Identify <u>areas at elevated risk of natural and climate change-related hazards and restrict development within these areas including, but not limited to, areas subject to flooding, sea-level rise, erosion, slope instability and wildfire.</u> <del>with consideration of climate change, areas hazardous to development activities, including, but not limited to, areas subject to flooding, erosion, wildfire, or slope instability, and direct development away from such hazards.</del>
3.4.7	<b>Economic Activities</b> Support <u>sustainable</u> economic activities that are compatible with the preservation and protection of the Trust Area and its unique amenities, environment, <u>community health</u> , and <u>community character</u> <del>that consider transportation and infrastructure capacity.</del>
3.4.8	<b>Community Heritage Sites</b> Identify, preserve, protect, and support the restoration of community heritage sites.

### Advisory Policies – Managing Growth and Development

#### Local trust committees and island municipalities should...

3.4.9	<b>Existing Development Potential</b> <u>Identify land where current zoning or other land use regulations allow development that could be inconsistent with the object of the trust, existing development potential is not suitable and consider policy and/or regulatory options to reduce development potential or minimize the impacts of future development.</u>
3.4.10	<b>Economic Development Opportunities for Indigenous Communities</b> <u>Through engagement with Indigenous Governing Bodies, support economic development opportunities for Indigenous communities.</u>

**Commented [YA9]:** Suggested revision to address potential ambiguity in the phrase “existing development potential is not suitable”

### Directive Policies - Housing

Local trust committees and island municipalities shall, in the preparation of official community plans and amendments; and

Local trust committees shall, in the preparation of regulatory bylaws and amendments . . .

3.4.9	<del>Appropriate-Suitable Locations for</del> <b>Densification/Additional Housing</b> Identify <u>appropriate-suitable</u> locations <u>where density increases that</u> could support <u>increased density for</u> the development of safe, secure, diverse, and <u>affordable-attainable</u> housing <u>while reducing dependency on private automobile use, and increasing use of trail systems, public transportation, and active transportation, and without adversely impacting the Trust Area and its unique amenities and environment.</u>
3.4.10	<b>Housing Diversity</b> <u>Support a range of housing types and tenures to help meet the identified housing needs of the island community and local Indigenous communities.</u>

<b>3.4.11</b>	<b>Clustered Small Dwelling Units</b> Support alternatives to <del>conventional</del> single-detached dwellings by establishing policies to permit clusters of small dwelling units in suitable areas.
<b>3.4.10</b>	<b>Short-Term Rentals</b> Identify and assess the impacts of short-term rentals of dwellings on the availability of safe, secure, and affordable housing and, where necessary, regulate and limit the number of short-term rentals accordingly.
<b>3.4.11.2</b>	<b>Floor Area and Lot Coverage Limits</b> <del>Determine appropriate</del> Set floor area and lot coverage limits for residential development to minimize negative environmental impacts, including on land used for agricultural purposes. <del>Determine appropriate floor area and lot coverage limits for residential development to minimize greenhouse gas emissions and cumulative impacts to the Trust Area and its unique amenities and environment, including impacts on agricultural land.</del>
<b>3.4.13</b>	<b>Affordable and Special Needs Housing</b> Prioritize the processing of rezoning applications from non-profit housing providers and public agencies, and the processing of housing agreement bylaws for affordable and special needs housing.
<b>3.4.14</b>	<b>Short-Term Rentals</b> Identify and assess the impacts of short-term rentals of dwellings on the availability of safe, secure and affordable housing and, where necessary, regulate and limit the number of short-term rentals accordingly.
<b>3.4.12</b>	<b>Housing Diversity</b> Support housing agreements for affordable housing, and special needs housing.

**Commented [YA10]:** Suggested revision for more direct language.

## Advisory Policies - Housing

### Local trust committees and island municipalities should...

<b>3.4.13</b>	<b>Housing Options</b> Support a range of housing types and tenures, including rentals, co-operatives and other alternatives to fee-simple ownership.
<b>3.4.15</b>	<b>Housing for Indigenous People</b> Through engagement with Indigenous Governing Bodies, support housing opportunities for Indigenous people in the Islands Trust Area.
<b>3.4.16</b>	<b>Multi-Unit Residential</b> Implement land use regulations for affordable and special needs housing and other multi-unit residential development that allow for a range of potential configurations on the site to accommodate changing construction conditions, with form and character controlled through development permit areas.
<b>3.4.17</b>	<b>Natural Building Materials and Techniques</b> Encourage construction of buildings and structures using local natural building materials and techniques, and minimize barriers to their use.

## Directive Policies - Transportation

### Local trust committees and island municipalities shall, in the preparation of official community plans and amendments; and

Local trust committees shall, in the preparation of regulatory bylaws and amendments . . .	
3.4.14	<b>Public and Active Transportation Networks</b> Identify and establish appropriately-situated, safe, comfortable, and equitable transportation networks <del>both on the islands and to the islands</del> that reduce dependency on private automobile use, encourage <del>electric vehicles</del> <u>zero emission modes of transportation</u> , and support increased use of trail systems, public transportation, and active transportation.
3.4.15	<b>Rural Roadways</b> Identify and protect rural roadways, including scenic and/or heritage roads.

Advisory Policies - Transportation	
Local trust committees and island municipalities should...	
3.4.16	<b>Road Systems</b> Ensure that road location, design, construction, and road systems are compatible with preservation and protection of the Trust Area and its unique amenities and environment.
3.4.17	<b>Transportation Network Vulnerabilities</b> <del>Cooperate with relevant agencies to identify parts of the local transportation network at risk of damage or deterioration and participate in planning to address mitigation or infrastructure relocation where necessary.</del>

Directive Policies - Waste	
Local trust committees and island municipalities shall, in the preparation of official community plans and amendments; and	
Local trust committees shall, in the preparation of regulatory bylaws and amendments . . .	
3.4.17	<b>Disposal of Waste</b> <del>Where required, identify appropriate locations for waste transfer stations for the removal of waste from the Islands Trust Area on islands with vehicle ferry service that are compatible with the preservation and protection of the Trust Area and its unique amenities and environment.</del>
3.4.18	<b>Septic Wastewater Disposal Systems</b> Establish requirements for the location and siting of new <del>septic wastewater disposal</del> systems to mitigate adverse impacts on the Trust Area and its unique amenities and environment, <del>including with a focus on</del> Indigenous Peoples' cultural heritage sites and marine harvesting areas.

Directive Policies - Recreation	
Local trust committees and island municipalities shall, in the preparation of official community plans and amendments; and	
Local trust committees shall, in the preparation of regulatory bylaws and amendments . . .	
3.4.19	<b>Preservation of Natural Heritage</b> Identify, preserve, protect, and support the restoration of natural heritage sites.
3.4.20	<b>Location and Types of Recreational Facilities</b> Identify appropriate locations <del>for, and</del> types of, <del>and access to</del> facilities for low-impact and active recreational activities, and discourage high-impact <del>recreational facilities</del> <u>activities</u> that may adversely impact the preservation and protection of the Trust Area and its unique amenities and environment.

<del>3.4.21</del>	<del>Access to Recreational Facilities</del> <del>Identify appropriate locations, types, and safe public access to recreational facilities</del>
3.4.22	<del>Access to Community Marinas, Boat Launches, and Docks</del> Identify <del>and support</del> safe public access <del>and routes</del> to community marinas, boat launches, and docks.
3.4.23	Access to Anchorages Identify appropriate and safe small-craft anchorage public-access locations.
3.4.24	Trail Systems Identify appropriate locations <del>for</del> , types <del>of</del> , and safe public access to public pedestrian, equestrian and bicycle trail systems to support active recreation that is compatible with preservation and protection of the Trust Area and its unique amenities and environment.
3.4.25	Public Shoreline Access Identify <del>new, and</del> protect <del>existing, and</del> support the acquisition and protection of <del>areas providing</del> safe public access to marine shorelines and along marine shorelines that are appropriate for low-impact, public recreational use and do not adversely impact the Trust Area and its unique amenities and environment, <del>including Indigenous Peoples' identified cultural heritage sites and marine harvesting areas.</del>
<del>3.4.26</del>	<del>Public Access to Public/Crown Land</del> <del>Identify and support the acquisition and protection of public access and routes to publicly-owned lands.</del>
<del>3.4.26</del> 27	Destination Gaming Facilities Prohibit destination gaming facilities such as casinos and commercial bingo halls.

## Objective Goal 5:

### Fostering Sustainable Stewardship of Lands and Waters

This objective advances Principle 2.1.3 (Limit the Rate and Scale of Growth and Development) and Principle 2.1.2 (Prioritize Environmental and Indigenous Cultural Heritage Protection). Islands Trust Council recognizes that sustainable use of lands and waters in the Islands Trust Area is important to the long-term well-being and resilience of ecosystems in the Islands Trust Area and the communities that depend on them. This section lays out policies for sustainable land and water use that support the long-term health of ecosystems and sustainability of freshwater.

#### Directive Policies - Freshwater

Local trust committees and island municipalities shall, in the preparation of official community plans and amendments; and

Local trust committees shall, in the preparation of regulatory bylaws and amendments . . .

3.5.1	<b>Freshwater Sustainability</b> Ensure that neither the density, nor intensity of land use is increased in watersheds where the quality or quantity of the supply of freshwater is likely to be inadequate or unsustainable.
3.5.2	<b>Freshwater Demand and Supply Projections</b> Ensure that existing, anticipated, and seasonal water demand and water availability are considered.
3.5.3	<b>Freshwater Self-Sufficiency</b> Ensure that islands are self-sufficient in their supply of freshwater.

3.5.4	<b>Saltwater Intrusion</b> <u>Identify areas at elevated risk of saltwater intrusion and restrict development serviced by groundwater within these areas.</u>
-------	--

Advisory Policies - Freshwater	
Local trust committees and island municipalities should ...	
3.5.4	<b>Freshwater Quality</b> Ensure that freshwater quality is maintained or remediated.
3.5.5	<b>Freshwater Uses</b> Strive to ensure that <del>freshwater use</del> <u>water quality in lakes, streams and wetlands is maintained, and that freshwater use</u> is not to the detriment of other uses of the waterway such as fish and <del>fish-amphibian</del> habitat uses, Indigenous cultural and spiritual uses, and aesthetic and recreational uses, <del>and the maintenance of water quality in lakes, streams, and wetlands.</del>
3.5.6	<b>Freshwater Storage</b> <u>Encourage freshwater storage in groundwater regions where the quality or quantity of groundwater is likely to be inadequate or unsustainable.</u>

Directive Policies - Forest Lands	
Local trust committees and island municipalities shall, in the preparation of official community plans and amendments; and	
Local trust committees shall, in the preparation of regulatory bylaws and amendments . . .	
3.5.6	<b>Forest Lands for Sustainable Management</b> Maintain large land holdings and parcel sizes to support sustainable forest management practices that are compatible with preservation and protection of the Trust Area and its unique amenities and environment.
3.5.7	<b>Forest Lands and Road Systems</b> Consider siting of roads and utility corridors to minimize the fragmentation of forest lands.
3.5.8	<b>Forest Lands and Wildfire Risk Management</b> Identify planning and land use management strategies that mitigate wildfire risk and that are appropriate to the unique biogeoclimatic zones and settlement patterns of each local planning area.

Directive Policies - Agricultural Lands	
Local trust committees and island municipalities shall, in the preparation of official community plans and amendments; and	
Local trust committees shall, in the preparation of regulatory bylaws and amendments . . .	
3.5.9	<b>Protection of Agricultural Lands</b> Identify and protect agricultural lands for current and future use consistent with the Agricultural Land Commission Act and its regulations for agricultural land within the Agricultural Land Reserve while considering downstream impacts, wildlife habitat, and adjacent properties.
3.5.10	<b>Agriculture and Adjacent Properties</b> Minimize any adverse impacts of land uses from adjacent properties on agricultural lands.

3.5.11	<b>Agriculture and Road Systems</b> Consider siting of roads and utility corridors to minimize fragmentation of agricultural lands.
3.5.12	<b>Economic Viability of Farms</b> Consider land uses and activities that support the economic viability of farms without compromising the agricultural capability of agricultural land or adversely impacting the Trust Area and its unique amenities and environment.

### Advisory Policies - Agricultural Lands

#### Local trust committees and island municipalities should ...

3.5.13	<b>Sustainable Agriculture</b> Preserve, protect, and encourage sustainable farming and the sustainability of farming.
3.5.14	<b>Food Security and Food Sovereignty</b> <u>Support initiatives that advance food security and Indigenous food sovereignty.</u>

### Directive Policies - Soil and Fill

#### Local trust committees and island municipalities shall, in the preparation of official community plans and amendments; and

#### Local trust committees shall, in the preparation of regulatory bylaws and amendments . . .

3.5.14	<b>Soil Removal and Deposit</b> Foster the preservation, protection, and restoration of soils in the Islands Trust Area.
3.5.15	<b>Soil and Fill from Middens and Foreshore Areas of Cultural Significance</b> Prohibit alteration, removal or excavation of soil or fill from <u>all identified archaeological sites, including</u> middens or foreshore areas identified as culturally significant areas.

### Directive Policies - Marine Shorelands

#### Local trust committees and island municipalities shall, in the preparation of official community plans and amendments; and

#### Local trust committees shall, in the preparation of regulatory bylaws and amendments . . .

3.5.16	<b>Aquaculture Tenures</b> Direct commercial aquaculture tenures to appropriate locations that will not adversely impact areas <u>identified as culturally significant by Indigenous Governing Bodies, that provide critical habitat for species at risk, are of recreational significance, of cultural, spiritual, archaeological, medicinal or recreational significance,</u> or established or designated upland land uses, anchorages or moorages.
3.5.17	<b>Setbacks from the Sea</b> <del>Consider the</del> <u>Incorporate</u> current and anticipated impacts of sea level rise and storm surge, and determine appropriate shoreline buffers and setbacks from the sea, taking into account best practices recommended by the federal and provincial governments.
3.5.18	<b>Soft Shoreline Protections</b> <del>Consider</del> <u>Prioritize</u> and foster soft shoreline approaches <del>first</del> , such as those identified by the “Green Shores” program, to set requirements for shoreline preservation, and to mitigate erosion of shoreline and foreshore cultural heritage sites.

3.5.19	<b>Vessel Moorage</b> <u>Prohibit the moorage of vessels in sensitive marine areas, including, but not limited to, eelgrass meadows, kelp forests, forage fish spawning areas, estuaries and mud flats.</u>
3.5.19	<b>Marinas</b> Identify requirements for the location, size, and nature of marinas that are compatible with <u>the</u> preservation and protection of the Trust Area and its unique amenities and environment.
3.5.20	<b>Sharing of Coastal Facilities</b> Identify opportunities for the sharing of coastal facilities such as docks, wharves, floats, jetties, boat houses, board walks, and causeways.
3.5.21	<del><b>Private Marine Docks</b></del> <u>Consider the cumulative effects of docks, and</u> limit or prohibit new <del>private</del> docks in areas identified as culturally significant by Indigenous Governing Bodies <del>and Indigenous Knowledge Holders</del> , in areas that provide critical habitat for species at risk, and in areas of recreational significance; <del>and consider the cumulative effects of docks.</del>
3.5.22	<b>Marine Structures</b> <u>Limit or prohibit the construction of installation of breakwaters, groynes, rock weirs and jetties in marine areas that are not zoned for group wharfage, marine commercial or industrial use, or ferry terminals.</u>

Directive Policies — Emissions <u>and Pollutants</u>	
Local trust committees and island municipalities shall, in the preparation of official community plans and amendments; and	
Local trust committees shall, in the preparation of regulatory bylaws and amendments . . .	
3.5.22	<b>Emissions <u>and Pollutants</u> to Air, Land, and Water</b> Regulate land use and development to reduce detrimental emissions <u>and pollutants</u> , including greenhouse gas emissions, to air, land, and water.

## Part 4: Implementation

### 4.1 – Policy Statement Implementation

#### Organizational Policy Alignment

Section 15 of the *Islands Trust Act* requires that Islands Trust Council must to adopt, by bylaw, adopt a trust policy statement that applies to the Islands Trust Area. The, and that this Policy Statement must be a general statement of the policies of Islands Trust Council to carry out the object of the Trust.

Commented [YA11]: Minor suggested revisions here.

Section 4(1) of the *Islands Trust Act* confirms that the Trust Council, Executive Committee, local trust committees and Islands Trust Conservancy are continued for the purpose of carrying out the object of the Trust.

Islands Trust Council, Islands Trust Executive Committee, local trust committees and island municipalities are expected to take general policy direction from the Policy Statement to ensure that decisions and activities of the organization are for the purpose of carrying out the Islands Trust Object. The Policy Statement should form the basis of Islands Trust Council's strategic planning process. To ensure consistency between the Policy Statement and the activities of Islands Trust Council, Islands Trust Executive Committee, local trust committees and island municipalities, staff should refer to the Policy Statement and its relevant sections in meetings, staff reports, work programs, inter-governmental agreements (including protocols, letters of understanding and memoranda of understanding) and responses to referrals from other agencies. All inter-governmental coordination agreements, external communications, and advocacy should be consistent with the principles and policies set out in the Policy Statement.

#### Statutory Bylaw Approval Process

The main implementation mechanism to ensure that for implementing the Policy Statement is implemented in local planning and land use management decisions making is the statutory bylaw referral process, as stipulated in under the *Islands Trust Act*, and any referral process under the letters patent of an island municipality.

Commented [YA12]: Minor suggested revision to include specific reference to letters patent bylaw referrals

Executive Committee Approval: Under Section 15(4) of the *Islands Trust Act*, bylaws submitted to the Islands Trust Executive Committee must not be approved by the Executive Committee, or Trust Council, if they are contrary to or at variance with the Islands Trust Policy Statement.

**Local Trust Committees:** Under Section 27 (1) of the *Islands Trust Act*, a local trust committee must submit its bylaws to Islands Trust Executive Committee for approval before adoption. If Islands Trust Executive Committee returns a bylaw with requested changes or refuses to approve a bylaw, the local trust committee may refer the bylaw to Islands Trust Council for approval. A bylaw has no effect until it is approved by Islands Trust Executive Committee or Islands Trust Council. A bylaw adopting or amending an official community plan has no effect until it is approved by the Minister responsible for Islands Trust.

**Island Municipalities:** Under Section 38 (1) of the *Islands Trust Act*, the council of a municipality, all or part of which is in the Islands Trust Area, must submit official community plan bylaws to Islands Trust Executive Committee for approval before adoption. If Islands Trust Executive Committee returns an official community plan bylaw with requested changes or refuses to approve the bylaw, the municipality may refer it to Islands Trust Council for approval. If Islands Trust Council returns or refuses to approve an official community plan bylaw, the municipality may submit it to the Minister for approval. These Bylaws have no effect until they are approved by Islands Trust Executive Committee, Islands Trust Council, or the Minister responsible for Islands Trust. Though not required under the *Islands Trust Act*, the letters patent for Bowen Island also require referral of bylaws other than official community plan bylaws.

Commented [YA13]: Minor suggested revisions.

Executive Committee Approval: Under Section 15(4) of the *Islands Trust Act*, bylaws submitted to the Executive Committee must not be approved by the Executive Committee, or Trust Council, if they are contrary to or at variance with the Islands Trust Policy Statement.

#### Implementing Reconciliation

The main mechanism by which Islands Trust Council's commitment to Reconciliation will be implemented through the Policy Statement is the requirement for local trust committees and island municipalities to engage Indigenous Governing Bodies on official community plan and land use bylaw amendments set out in Directive Policy 3.1.1.

Additionally, the Policy Statement advises local trust committees and island municipalities to engage with Indigenous Governing Bodies on discretionary planning and land use management decisions, and on topics that need engagement with Indigenous Governing Bodies in order to be effectively addressed.

## Policy Statement Implementation Plan

Prior to, or following the adoption of, a new Policy Statement, or amendments to it, Islands Trust Council should develop a plan to implement the Policy Statement. Execution of the Implementation Plan may inform the content of, or revisions to, the following documents:

- The Islands Trust Council Strategic Plan
- The Islands Trust Council Annual Budget
- The Policy Statement Implementation Policy
- Local trust committee and island municipality workplans
- Other documents as applicable

The Policy Statement Implementation Plan may guide the development of:

- A timeline to bring official community plans and land use bylaws into alignment with the Policy Statement
- A revised assessment tool that Islands Trust Executive Committee and Islands Trust Council can use to assess whether local trust committee and island municipality bylaws are contrary to or at variance with the Policy Statement
- Targets and indicators with which Islands Trust Council can monitor and evaluate implementation of the Policy Statement
- Annual monitoring and reporting activities
- Changes to existing Islands Trust Council policies, or new policies, to implement the Policy Statement
- Changes to existing Islands Trust Council agreements, or new agreements, with other levels of government, agencies, and Indigenous Governing Bodies, to implement the Policy Statement
- Communications regarding Policy Statement implementation
- Other implementation actions as applicable

## Monitoring and Evaluation:

Trust Council will report on its progress in implementing the objectives contained in the Policy Statement each year through the Islands Trust Annual Report.

## 4.2 – Policy Statement Amendments

### Policy Statement Amendment Projects:

At the beginning of each term, in conjunction with its strategic planning process, Islands Trust Council can identify any Policy Statement amendment tasks to be undertaken that term. Newly elected Islands Trust Councils will likely wish to engage with Indigenous Governing Bodies, and may wish to engage with other key partners and interested and affected parties across the Islands Trust Area to define priorities for Policy Statement amendments that term. Any topics that are not able to be addressed in a particular term could be noted on a “Policy Statement Amendment Topic Review Inventory” for consideration by Islands Trust Council at a later date. Once an amendment project is initiated, Islands Trust Council could assign the Executive Committee or a council committee the task of leading and coordinating the Policy Statement review and amendment project, with the support of other committees as appropriate. As part of its annual budget cycle, Islands Trust Council should consider allocating resources required for a Policy Statement amendment project, including for any related communications and engagement.

### Communications, Engagement, and Referrals:

As soon as practicable after the initiation of a Policy Statement amendment process, the assigned committee Islands Trust Council should adopt a communications and engagement plan appropriate to the scope and scale of the amendment project.

Proposed Policy Statement amendments must be referred to regional district boards in the Islands Trust Area and should be referred to Indigenous Governing Bodies.

While there are no statutory requirements for public engagement or public hearings related to the Policy Statement, in cases where major amendments are being considered, Trust Council should inform and consult members of the public and relevant partner agencies. Engagement and referral partners could include, but would not be limited to: local trust committees and island municipalities; the Islands Trust Conservancy Board; residents and non-resident property owners in the Islands Trust Area; other residents of British

Columbia; municipal councils, improvement district boards operating within the Islands Trust Area; relevant provincial government agencies; and other persons and organizations who would be interested and affected by the proposed Policy Statement amendments.

### **Legislative Process:**

Adoption of a Policy Statement amendment bylaw occurs only after Trust Council has undertaken four readings of the proposed Policy Statement bylaw and received approval by the Minister responsible for Islands Trust. Policy Statement amendment bylaws become effective upon date of adoption and are not retroactive.

### **Implementation of Policy Statement Amendments:**

~~Policy Statement amendment bylaws become effective upon date of adoption and are not retroactive. Following the adoption of Policy Statement amendments, Trust Council should in consultation with each local trust committee and island municipality develop a "Policy Statement Implementation Plan". The Policy Statement Implementation Plan will set a timeline for official community plans and regulatory bylaw amendments to bring them into compliance with the amended Policy Statement. As part of its budget processes, Trust Council may allocate resources to support local trust committees and island municipalities to undertake this work.~~

# Glossary of Terms

**NOTE:** The source references listed in this draft glossary would be removed prior to first reading and are included here solely for informational purposes during the amendment review process. Citations are not typically included in glossaries.

<b>Aboriginal</b> (see Indigenous Peoples)	<del>This is a collective name for all of the original peoples of Canada and their descendants. The Constitution Act of 1982 specifies that the Aboriginal Peoples in Canada consist of three groups – First Nations, Inuit and Métis – with unique heritages, languages, cultural practices and spiritual beliefs. The term Aboriginal peoples should not be used to describe only one or two of the groups. Because Aboriginal peoples is the term used in Canada's constitution, it has specific importance within a Canadian legal context. Other terms include Indigenous Peoples, Native Peoples, Original Peoples, or First Peoples. For our purposes, the term "Indigenous Peoples" is currently the preferred and most respectful term to use. (Source: Assembly of First Nations)</del>
<b>Active Recreation</b>	<del>Active recreation means recreation that is of a formal nature, often performed with specific people or teams, requires specialized equipment or prescribed places, sites or fields, but excludes recreation that primarily involves the use of a power-driven conveyance.</del>
<b>Archaeological Sites</b>	Archaeological sites consist of the physical remains of past human activity.  All archaeological sites in British Columbia are protected under the <i>Heritage Conservation Act</i> . This applies whether sites are located on public or private land, and whether the site is known or unknown. Protected archaeological sites may not be altered or changed in any manner without a permit. There are over 60,000 archaeological sites recorded in BC's Provincial Heritage Register including the remains of village and other habitation sites, as well as resource procurement activities such as fishing weirs and culturally modified trees. These sites may date anywhere from recent times to 14,000+ years ago, and studies continue to uncover new information. (Source: BC Archaeology Branch)
<b>Biodiversity</b>	Biodiversity (biological diversity) is the variety of living things, including diversity within species (genetic diversity), diversity between species, and diversity of ecosystems. When biodiversity characteristics are assessed for any location or region, three attributes are considered: 1) composition (describes the parts of each biodiversity component in that area – e.g. habitat types, species present, genetic diversity within species); 2) structure (refers to the physical characteristics supporting that composition – e.g. size of habitats, forest canopy structure, etc.); 3) function (means the ecological and evolutionary processes affecting life within that structure – e.g. pollination, natural disturbances, predator-prey relationships). (Source: Biodiversity BC)
<b>Colonialism</b>	Colonizers are groups of people or countries that come to a new place or country and steal the land and resources from Indigenous peoples, and develop a set of laws and public processes that are designed to violate the human rights of the Indigenous peoples, violently suppress the governance, legal, social, and cultural structures of Indigenous peoples, and force Indigenous peoples to conform <del>with to</del> the structures of the colonial state. Historical and ongoing colonialism, including the dispossession of lands, has a deep and devastating impact on Indigenous people and communities. (Source: BC Addressing Racism Working Glossary; BC Office of the Human Rights Commissioner)
<b>Community Heritage Site</b>	A community heritage site is real property that is considered to be heritage property. (Source: Local Government Act)
<b>Conservation</b>	Actions, legislation, or institutional arrangements that lead to the protection or preservation of a given species, group of species, habitat, natural area, or property or areas of <del>human</del> heritage value or character.
<b>Critical Habitat</b>	Under the federal <i>Species at Risk Act</i> , critical habitat is the habitat that is necessary for the survival or recovery of listed extirpated, endangered, or threatened species, and that is identified as critical habitat in a recovery strategy or action plan. Extirpated species means a wildlife species that no longer exists in the wild in Canada, but exists elsewhere in the wild. Endangered species means a wildlife species that is facing imminent extirpation or extinction. Threatened species means a wildlife species that is likely to become an endangered species if nothing is done to reverse the factors leading to its extirpation or extinction. (Source: <i>Species at Risk Act</i> )

<b>Land Use Density and Intensity</b>	<p>Density is regulated through zoning. Density may be defined by the number of units per given area of land. Density may also be measured by dividing the built area including all floor area, by the total area of the lot, e.g., floor area ratio (FAR). <del>is an example</del></p> <p>Intensity of use refers to the impacts of different types of land uses, e.g., certain types of commercial or industrial uses could be more intense with more impacts than residential or vice versa.</p> <p>Of note, density and intensity of use can combine to increase cumulative impacts of the land use.</p>
<b>Ecosystem</b>	<p>An ecosystem is a collection of communities of both living and non-living things that are connected. The biotic elements in an ecosystem include living things such as plants and animals. The abiotic elements found in an ecosystem include non-living things like land forms or climate. Healthy ecosystems provide important “services,” like clean air and water, healthy forests and farms, and habitat for plants and animals. (Source: Government of BC)</p>
<b>Ecosystem Integrity</b>	<p>Ecosystems have integrity when their native components, such as native species, biological communities, natural landscapes and ecological functions, are intact and are likely to persist. (Source: Government of Canada)</p>
<b>Environment</b>	<p>The components of the Earth, including:</p> <ol style="list-style-type: none"> <li>1. land, water and air, including all layers of the atmosphere,</li> <li>2. all organic and inorganic matter and living organisms, and</li> <li>3. the interacting natural systems that include components referred to in paragraphs (a) and (b).</li> </ol> <p>(Source: Impact Assessment Agency of Canada)</p>
<b>Equity / Equitable</b>	<p>Equity refers to achieving parity in policy, process and outcomes for historically and/or currently underrepresented and/or marginalized people and groups while accounting for diversity. It considers power, access, opportunities, treatment, impacts and outcomes. (Source: Equity &amp; Inclusion Glossary, UBC)</p>
<b>First Nations</b>	<p>First Nations is not a legal term but came into common use in the 1970s to replace Indian, which some people found offensive. Many communities have also replaced “band” with “First Nation” in their names. Symbolically, the term elevates First Nations to the status of “first among equals” alongside the English and French founding nations of Canada. It also reflects the sovereign nature of many communities, and the ongoing quest for self-determination and self-government. First Nations people may live on or off reserve, they may or may not have legal status under the <i>Indian Act</i>, and they may or may not be registered members of a community or nation. “First Nations” should be used exclusively as a general term as community members are more likely to define themselves as members of specific nations or communities within those nations. (Source: Assembly of First Nations)</p>
<b>Groundwater Recharge Areas</b>	<p>Groundwater recharge areas are terrain that inherently provide geographical and ecological conditions for the infiltration of water from the land surface to the subsurface through soils, sediments, and fractured bedrock to replenish groundwater sources.</p> <p>Groundwater recharge areas can be <i>diffuse</i> where widespread precipitation on the landscape infiltrates into groundwater sources or <i>localized</i> where discrete surface water sources such as streams, lakes, septic fields, and/or irrigation fields infiltrate into groundwater sources. Groundwater recharge areas that have a significant groundwater recharging effect for drinking water sources or groundwater dependent ecosystems in the Islands Trust Area are defined as <i>Critical Aquifer Recharge Areas</i>.</p>
<b><u>Groundwater Region</u></b>	<p><u>A groundwater region is a defined geographic area characterized by shared groundwater recharge, flow patterns, usage, and hydrogeological features, and that has clusters of wells that draw from common recharge zones. Analogous to surface-water watersheds – which are delineated based on drainage to a common outlet – groundwater regions are mapped to support the sustainable assessment, protection, and management of subsurface freshwater resources. Unlike surface watersheds, groundwater regions may span multiple watershed boundaries due to the complex movement of groundwater. These regions serve as practical planning units to guide evidence-based decisions regarding land use, water allocation, and ecosystem protection.</u></p>
<b>Heritage Site</b>	<p>Heritage site means, whether designated or not, land, including land covered by water, that has heritage value to British Columbia, a community or an aboriginal people.</p> <p>(Source: BC Heritage Conservation Act)</p>

<b>Housing Diversity</b>	Housing diversity refers to the range of housing types and tenures in a community that allow people to find appropriate housing as their needs change over time, and at all stages of life.
<b>Inclusive / Inclusion</b>	Inclusion is an active, intentional, and continuous process to address inequities in power and privilege, and build a respectful and diverse community that ensures welcoming spaces and opportunities to flourish for all. (Source: Equity & Inclusion Glossary, UBC)
<b>Indigenous Cultural Heritage</b>	Indigenous Peoples understand and describe cultural heritage according to their distinct perspectives, traditions, and languages. For Indigenous Peoples, cultural heritage refers to ideas, experiences, objects, artistic expressions, practices, knowledge, and places that are valued because they are culturally meaningful, connected to shared memory, or linked to collective identity. Indigenous cultural heritage cannot be separated from either Indigenous identity or Indigenous life. Indigenous cultural heritage can be inherited from ancestors or it can be created by people today as a legacy for future generations. Indigenous Peoples have a right to identify their own cultural heritage, interpret its meaning, and safeguard its value. (Source: Indigenous Heritage Circle)
<b>Indigenous Governing Body</b>	Indigenous Governing Body means an entity that is authorized to act on behalf of Indigenous peoples that hold rights recognized and affirmed by section 35 of the <i>Constitution Act, 1982</i> .
<b>Indigenous Knowledge / Knowledge Holders</b>	There is no single definition of Indigenous Knowledge. For <del>the purposes of this document</del> our purposes, we understand "Indigenous Knowledge" as a term that refers to a set of complex knowledge systems based on the worldviews of Indigenous peoples. Indigenous Knowledge reflects the unique cultures, languages, values, histories, governance and legal systems of Indigenous Peoples. It is place-based, cumulative and dynamic. Indigenous Knowledge systems involve living well with, and being in relationship with, the natural world. Indigenous Knowledge systems build upon the experiences of earlier generations, inform the practice of current generations, and evolve in the context of contemporary society. Different First Nations, Inuit and Métis communities each have distinct ways of describing their knowledge. Knowledge Holders are the only people who can truly define Indigenous Knowledge for their communities. It is important to note that some Indigenous communities are struggling to maintain their Indigenous Knowledge due to ongoing impacts of colonialism. (Source: Impact Assessment Agency of Canada)
<b>Indigenous Peoples</b> (see Aboriginal Peoples)	Indigenous Peoples has the same meaning as aboriginal peoples in section 35 of the <i>Constitution Act, 1982</i> . The Assembly of First Nations also states: There is no official definition of Indigenous Peoples. In part, Indigenous communities, peoples and nations can be described as those which, having a historical continuity with pre-invasion and pre-colonial societies that developed on their territories, consider themselves distinct from other sectors of the societies now prevailing on those territories. Other terms include Aboriginal Peoples, Native Peoples, Original Peoples, or First Peoples. (Source: Assembly of First Nations)
<b>Indigenous Rights</b>	The term 'Indigenous Rights' is to be interpreted in accordance with the Province of British Columbia's Distinctions-Based Approach Primer, December 2023.
<b>Middens</b>	Midden, or 'shell midden' archaeological sites are indicative of past First Nations settlement activity. Formed by the accumulation of stratified cultural deposits over thousands of years, shell midden sites represent some of the most complex archaeological sites in the world.  Source: McLay et al (2008) <i>A'ihut tu tet Sul'hweentst Respecting the Ancestors</i>  Note: A midden may be an archaeological indicator of village and burial sites, and may contain ancestral remains

<b>Natural Heritage Sites</b>	<p>Natural heritage sites are natural areas that:</p> <ul style="list-style-type: none"> <li>• Furnish outstanding examples of Earth's record of life or its geologic processes;</li> <li>• Provide excellent examples of ongoing ecological and biological evolutionary processes;</li> <li>• Contain natural phenomena that are rare, unique, superlative, or of outstanding beauty; or</li> <li>• Furnish habitats for rare or endangered animals or plants or are sites of exceptional biodiversity.</li> </ul>
<b>Nature-based solutions</b>	<p>Nature-based solutions are actions to protect, sustainably manage, and restore natural and modified ecosystems that address societal challenges effectively and adaptively, simultaneously benefiting people and nature.</p> <p>Nature-based Solutions address societal challenges through the protection, sustainable management and restoration of both natural and modified ecosystems, benefiting both biodiversity and human well-being. Nature-based Solutions are underpinned by benefits that flow from healthy ecosystems. They target major challenges like climate change, disaster risk reduction, food and water security, biodiversity loss and human health, and are critical to sustainable economic development.</p> <p>(Source: International Union for Conservation of Nature (IUCN))</p>
<b>Precautionary Principle</b>	<p>Principle 15 of the Rio Declaration, known as the precautionary principle, states: "In order to protect the environment, the precautionary approach shall be widely applied by States according to their capabilities. Where there are threats of serious or irreversible damage, lack of full scientific certainty shall not be used as a reason for postponing cost-effective measures to prevent environmental degradation." Four central components of the precautionary principle include: taking preventive action in the face of uncertainty; shifting the burden of proof to the proponents of an activity; exploring a wide range of alternatives to possibly harmful actions; and increasing public participation in decision making. (Source: <i>The Precautionary Principle in Environmental Science</i>, Kriebel et al., 2001)</p>
<b>Preservation</b>	<p>To maintain in a given condition. Preservation often requires maintaining the processes that generate the desired condition.</p>
<b>Protection</b>	<p>To maintain over the long term by managing, or if necessary limiting, the type and intensity of development or activity to ensure that valued attributes are not compromised or destroyed.</p>
<b>Reconciliation</b>	<p>Reconciliation is about establishing and maintaining a mutually respectful relationship between Aboriginal and non-Aboriginal peoples in this country. In order for that to happen, there has to be awareness of the past, an acknowledgement of the harm that has been inflicted, atonement for the causes, and action to change behavior. (Source: Truth &amp; Reconciliation Commission)</p>
<b>Restoration</b>	<p>Restoration is the process of assisting the recovery of an ecosystem that has been degraded, damaged, or destroyed. Ecological restoration seeks to initiate or accelerate ecosystem recovery following damage, degradation, or destruction. (Source: Society for Ecological Restoration)</p>
<b>Restrict</b>	<p>To confine, bound or limit, not necessarily prohibit.</p>

<b>Sensitive Ecosystems</b>	<p>Sensitive ecosystems are classified as 'sensitive' because of their rarity and vulnerability to disturbances such as human impacts and climate change. The BC Sensitive Ecosystems Inventory identifies sensitive ecosystem types, which have been adapted by the Islands Trust Conservancy to identify sensitive ecosystems commonly found in the Islands Trust Area, including:</p> <p><b>Cliff:</b> Steep slopes, often with exposed bedrock. Very little soil accumulation, and only exceptionally hardy trees and plants. Cliffs are important vegetation refugia because they are often inaccessible to deer browsing or livestock grazing and can be important nesting habitat for birds.</p> <p><b>Freshwater:</b> all freshwater networks including but not limited to streams, lakes, wetlands, groundwater sources, springs, and precipitation<sup>2</sup>.</p> <p><b>Herbaceous:</b> Shallow soils characteristic of herbaceous ecosystems support low-growing vegetation, such as grasses, forbs (low, broad-leaved plants), wildflowers, mosses and lichens. Few trees and shrubs survive on these sites due to the fast-drying and often shallow nature of the exposed soils.</p> <p><b>Old and Mature Forest:</b> Dry to moist forests dominated by conifer or deciduous tree species with a canopy cover of over 30%. Old forests have a stand age of over 250 years.; Mature forests have a stand age of 80–250 years.</p> <p><b>Riparian:</b> Located adjacent to lakes, streams and rivers and characterized by plant communities and soils dependent on increased moisture. Influenced by erosion, sedimentation, flooding and seepage.</p> <p><b>Wetland:</b> Feature moisture-dependent plants that thrive in an environment where water remains at or above the surface of the soil during most of the year. A wetland can be bog, fen, marsh, swamp, shallow water, wet meadow or a mixture of these types.</p> <p><b>Woodland:</b> Dry and open forests dominated by a mix of broadleaf and coniferous tree species with canopy coverage of 10–30%. Generally restricted to south-facing slopes and ridges with shallow soils and bedrock outcroppings. (Source: BC Sensitive Ecosystems Inventory, as adapted in Islands Trust Conservancy Regional Conservation Plan 2018-2027)</p>
<b>Species At Risk</b>	<p>An extirpated, endangered, threatened species, or a species of special concern. Extirpated species means a wildlife species that no longer exists in the wild in Canada, but exists elsewhere in the wild. Endangered species means a wildlife species that is facing imminent extirpation or extinction. Threatened species means a wildlife species that is likely to become an endangered species if nothing is done to reverse the factors leading to its extirpation or extinction. Species of special concern means a wildlife species that may become a threatened or an endangered species because of a combination of biological characteristics and identified threats. (Source: Federal <i>Species at Risk Act</i>)</p>
<b>Stewardship</b>	<p>Voluntary, cooperative actions that nurture and take responsibility for the long-term integrity of the environment and amenities in the Islands Trust Area. <u>For Indigenous Peoples, stewardship may be mandatory under Indigenous law.</u></p>
<b>Sustainable</b>	<p>Capable of being maintained indefinitely; capable of meeting the environmental, economic, and social needs of current generations without compromising the ability of future generations to meet their needs.</p>
<b>Treaties / Treaty Nations</b>	<p>Treaties are constitutionally protected, government-to-government agreements that identify, define and implement a range of rights and obligations, creating long-term, mutually binding commitments. Treaties negotiated through the BC treaty negotiations process are tripartite agreements between the governments of Canada, British Columbia, and a First Nation. The goal of treaties is reconciliation. Treaties signed with First Nations in Canada between 1701 and 1923 are commonly referred to as historic treaties. In BC, there are Douglas treaties, signed with First Nations on Vancouver Island, and Treaty 8 covering a portion of northeastern BC. Treaties signed today are called modern treaties, and cover where there are no historic treaties, and can also deal with matters not addressed in historic treaties. (Source: BC Treaty Commission)</p>
<b>Watershed</b>	<p><u>A watershed is a topographically-defined area where all precipitation – rainfall and snowmelt – flows downslope via surface or subsurface pathways to a common receiving water body such as a stream, wetland, lake, or the ocean. Due to the islands' high shoreline-to-area ratio, many watersheds in the Islands Trust Area are non-basin watersheds the ephemeral flows and no defined channels or permanent receiving water bodies.</u></p>