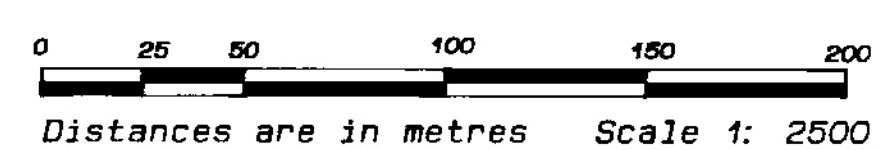


LEGEND

B.C.G.S. 92B 094 & B.C.G.S. 92B 084



- Denotes standard iron post
Denotes lead plug
Denotes standard concrete post
Denotes standard capped post
Denotes traverse hub
Denotes Aluminum post

Bearings are Astronomic derived from Plan 28824 except for Bearings to Bearing trees which are magnetic

TIES TO NATURAL BOUNDARY OF OCEAN

from traverse hub 186

Table with 3 columns: distance, bearing, and value. Rows include 186 to 187, 186 to 188, 186 to 189, 186 to 190, 186 to 191, 186 to 192, 186 to 193, 186 to 194, 186 to 195.

from traverse hub 100

Table with 3 columns: distance, bearing, and value. Row: 100 to 185.

from traverse hub 103

Table with 3 columns: distance, bearing, and value. Rows include 103 to 178, 103 to 179, 103 to 180, 103 to 181, 103 to 182, 103 to 183, 103 to 184.

from traverse hub 102

Table with 3 columns: distance, bearing, and value. Rows include 102 to 158, 102 to 162, 102 to 163, 102 to 166, 102 to 167, 102 to 169, 102 to 171, 102 to 172, 102 to 174, 102 to 175, 102 to 176, 102 to 177.

from traverse hub 104

Table with 3 columns: distance, bearing, and value. Rows include 104 to 153, 104 to 156.

STRATA PLAN OF LOT A, DISTRICT LOT 14, GALIANO

ISLAND, COWICHAN DISTRICT, PLAN VIP

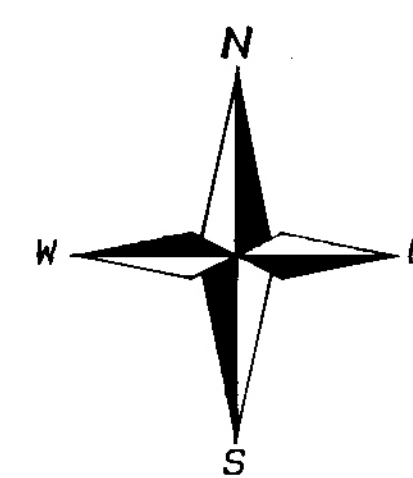
FIRST SHEET sheet 1 of 3 sheets

STRATA PLAN No. VIS 4887

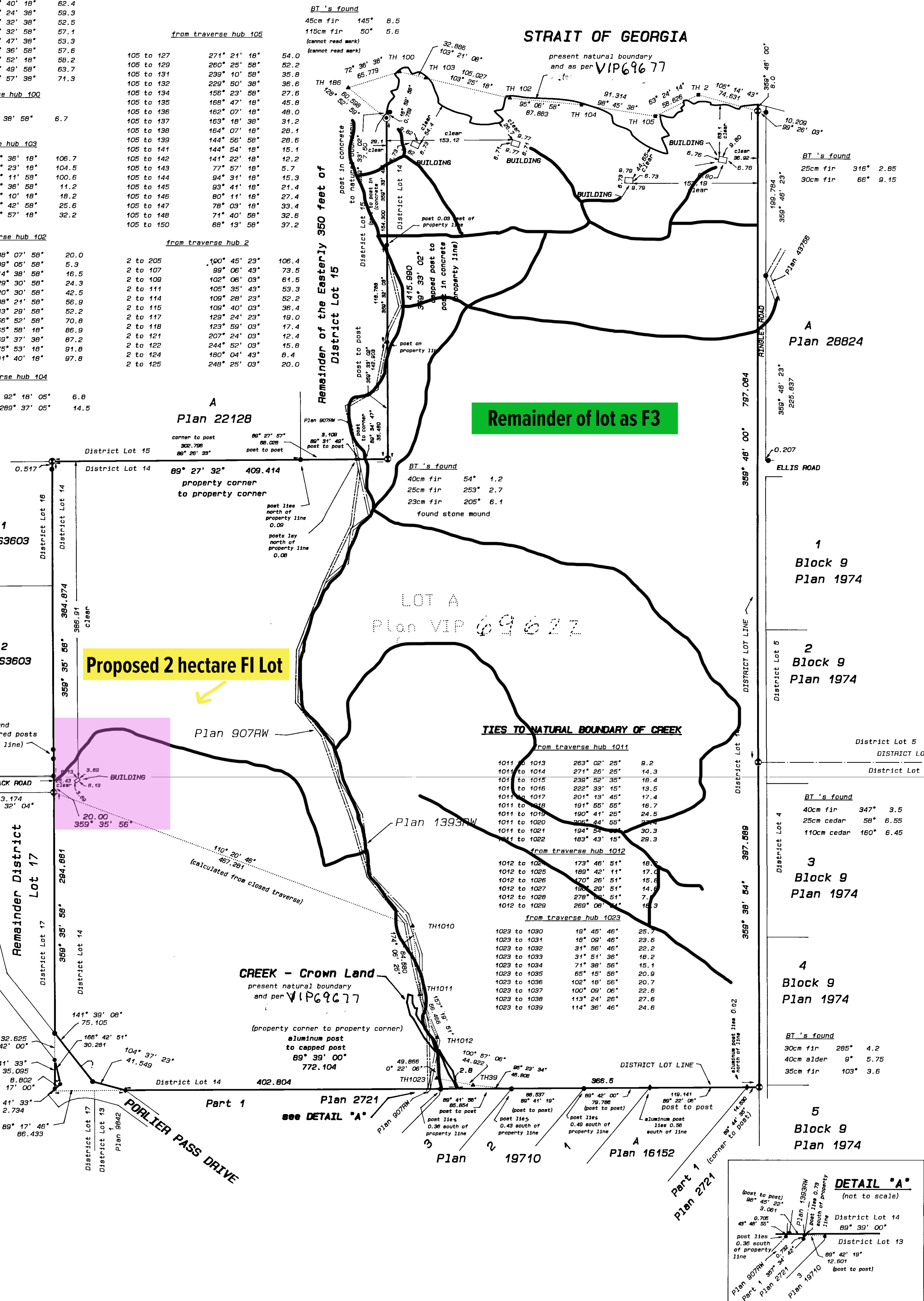
Deposited and Registered in the Land Title Office at Victoria, B.C.

this 28 day of OCT 1999

Signature of Glen Mitchell, Deputy Registrar, EN98619



STRAIT OF GEORGIA



Proposed 2 hectare FI Lot

Remainder of lot as F3

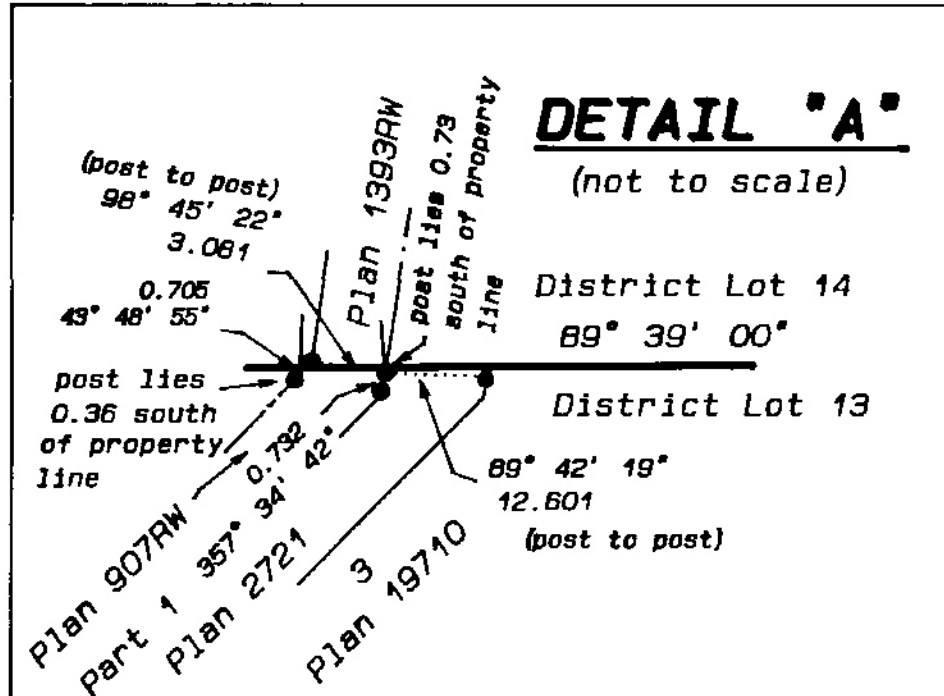
Block 9 Plan 1974

Block 9 Plan 1974

Block 9 Plan 1974

Block 9 Plan 1974

Block 9 Plan 1974



The address for service of documents is: #2566 Bowker Avenue, Victoria, B.C. V8R 2G1

I, Glen Mitchell, of Victoria, a British Columbia Land Surveyor, hereby certify that the building erected on the parcel described above is wholly within the external boundaries of the parcel

this 6th day of OCT 1999

Signature of Glen Mitchell, B.C.L.S.

FILED 2000-02-02-14-53.13.972793

Glen Mitchell, B.C.L.S. Land Surveyor, 1030 North Park Street, Victoria, B.C. V8T 1C6, telephone: 385-1712

This plan lies within the Capital Regional District and the Saanich/Capital Assessment District