



Welcome!

Keats (Lehk'tines) Island Marine Shoreline Protection Project

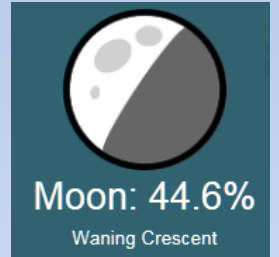
This Evening's Agenda:

- Presentations
- Overview of community questionnaire
- Q+A Session
- Open House

Wednesday,
October 3, 2018



Sunrise 7:17 am
Sunset 6:48 pm



Moonset 4:12 pm
Moonrise 12:15 am



High Tide 2:26 pm
Low Tide 8:15 pm
High Tide 12:34 am



Presentation Outline

- Background to the Project
- Identification & Protection of Shoreline Features and Functions
- Options for Policy & Regulatory Changes
- Options for Voluntary Stewardship
- Community Questionnaire
- Question & Answer Session

Background

- LTC top-priority project
- Phase 1 (July 26th, **today** and community questionnaire):
 - share information
 - introduce potential policy, regulatory, and voluntary stewardship options
 - input from community
- Subsequent phase informed by events and questionnaire



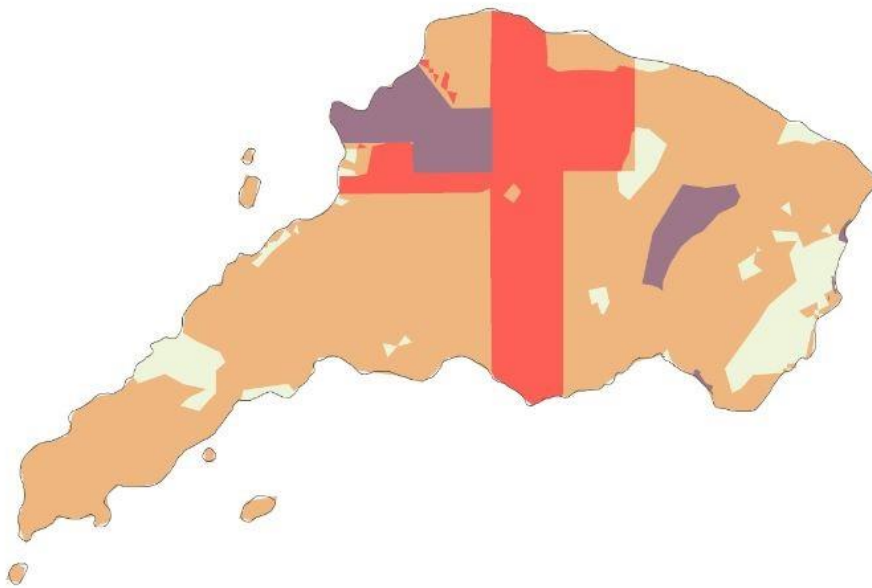
Keats Island Shoreline

- What aspects of the Keats shoreline do you wish to protect?
- What are the current/potential future threats to those values?





Keats Island Shoreline Ecosystems



Legend

Protected Areas

Relative Value

Low

Medium

High

“Due to high amounts of unprotected high relative biodiversity composition values, Lasqueti, Gambier and Salt Spring local trust areas have been identified for high conservation focus.”

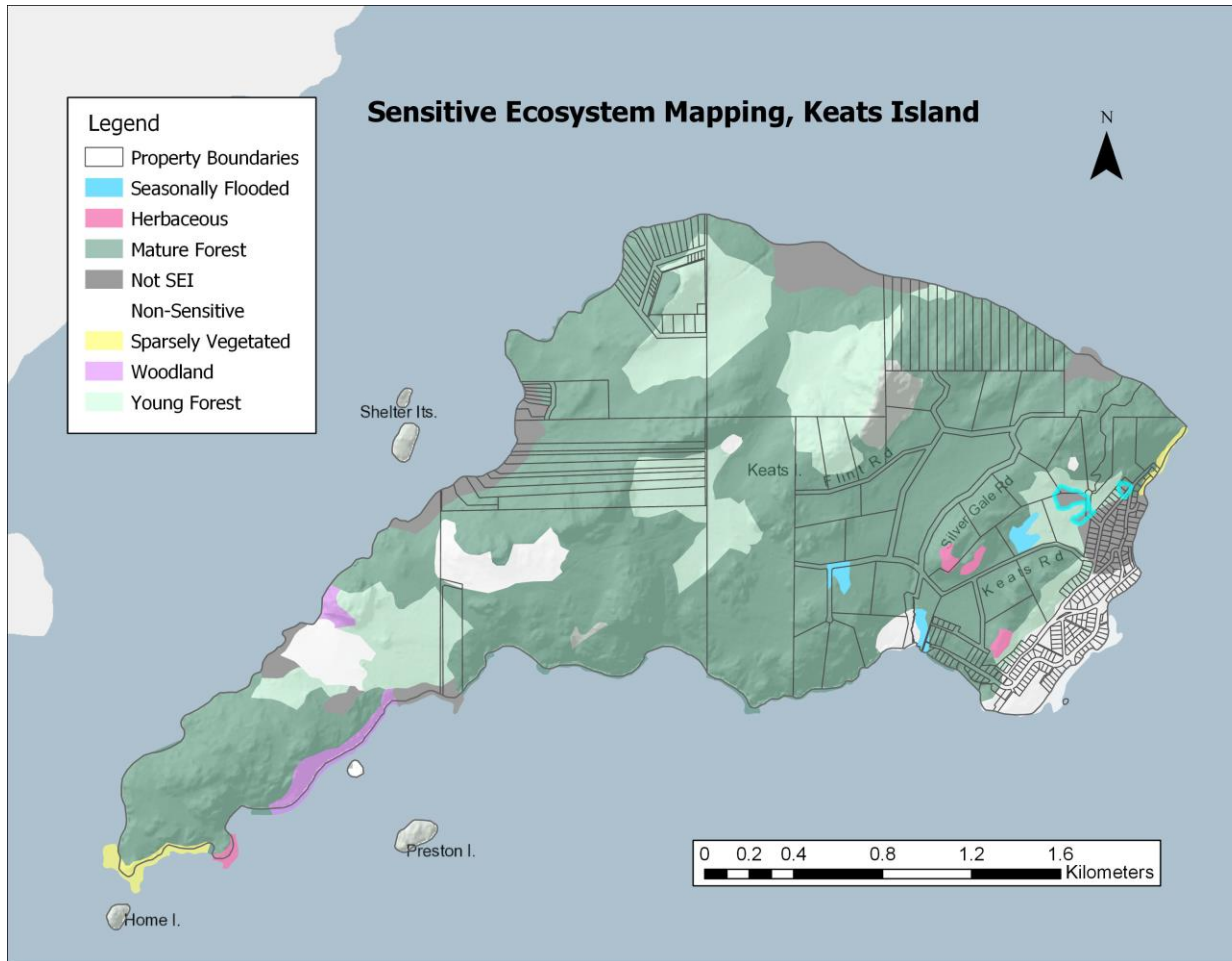


ISLANDS TRUST CONSERVANCY

Protecting Canada's Islands in the Salish Sea



Keats Island Sensitive Ecosystems



- Cliff
- Herbaceous
- Mature Forest (80-250 yrs)
- Old Forest (>250 yrs)
- Wetland
- Woodland



Important Marine Features/Functions



- Kelp beds
- Eelgrass beds
- Rockfish habitat
- Forage fish habitat





Shoreline Access Issues

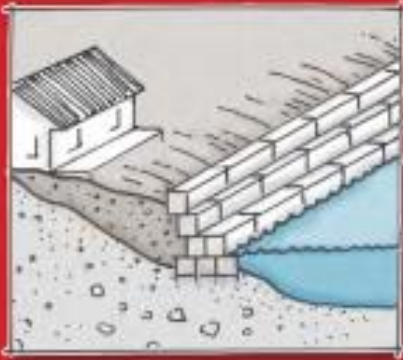
Keats Island Docks Type

- Small Dock
- Small Marina






structurally altered*



*Shorelines modified by facility development, principally boat ramps, seawalls, riprap, landfills, dykes, piers, groynes, or breakwaters.



LEGEND:

-  Sections of shoreline with significant structural alterations (>30% altered)

KEATS ISLAND:

**1.5 Km (9%)
Structurally
Altered Shoreline**

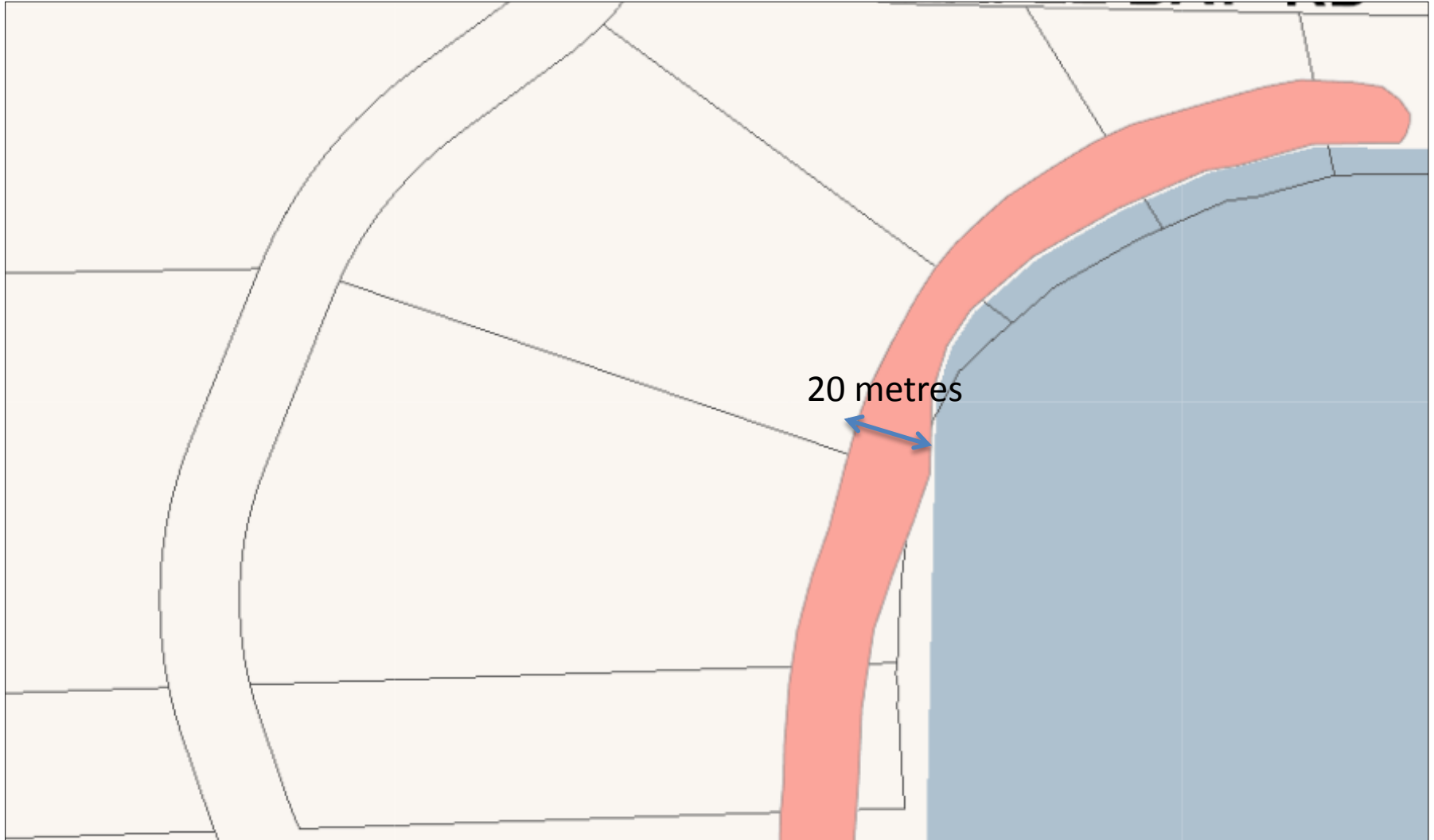


First Nations Considerations

- The islands have the highest concentration of archaeological values in the province.
- Estimated that 80% of known archaeological sites are within 20 metres of the natural boundary of the sea.



Gambier Island
Local Trust Committee



Islands Trust First Nations Engagement Policy



- In committing to Principle E.1, Islands Trust should and island municipalities are encouraged to:
- a. commit to “listening and learning” about the history of First Nations’ connection to the land and waters;
 - b. commit to “listening and learning” about First Nations’ perspective on treaties, rights and title; and
 - c. commit to acknowledging that history, to ensure First Nations and ourselves that the history has been heard and understood correctly.



Poor Site Planning

Threats to Shoreline Ecosystems



Infilling and Removal of Riparian Vegetation

- wildlife habitat loss
- juvenile salmon feeding reduced
- filtering function lost



Shoreline Hardening

- reduced sediment supply to shore
- lowering & hardening of beach
- loss of forage fish spawning areas
- reduction in habitat diversity

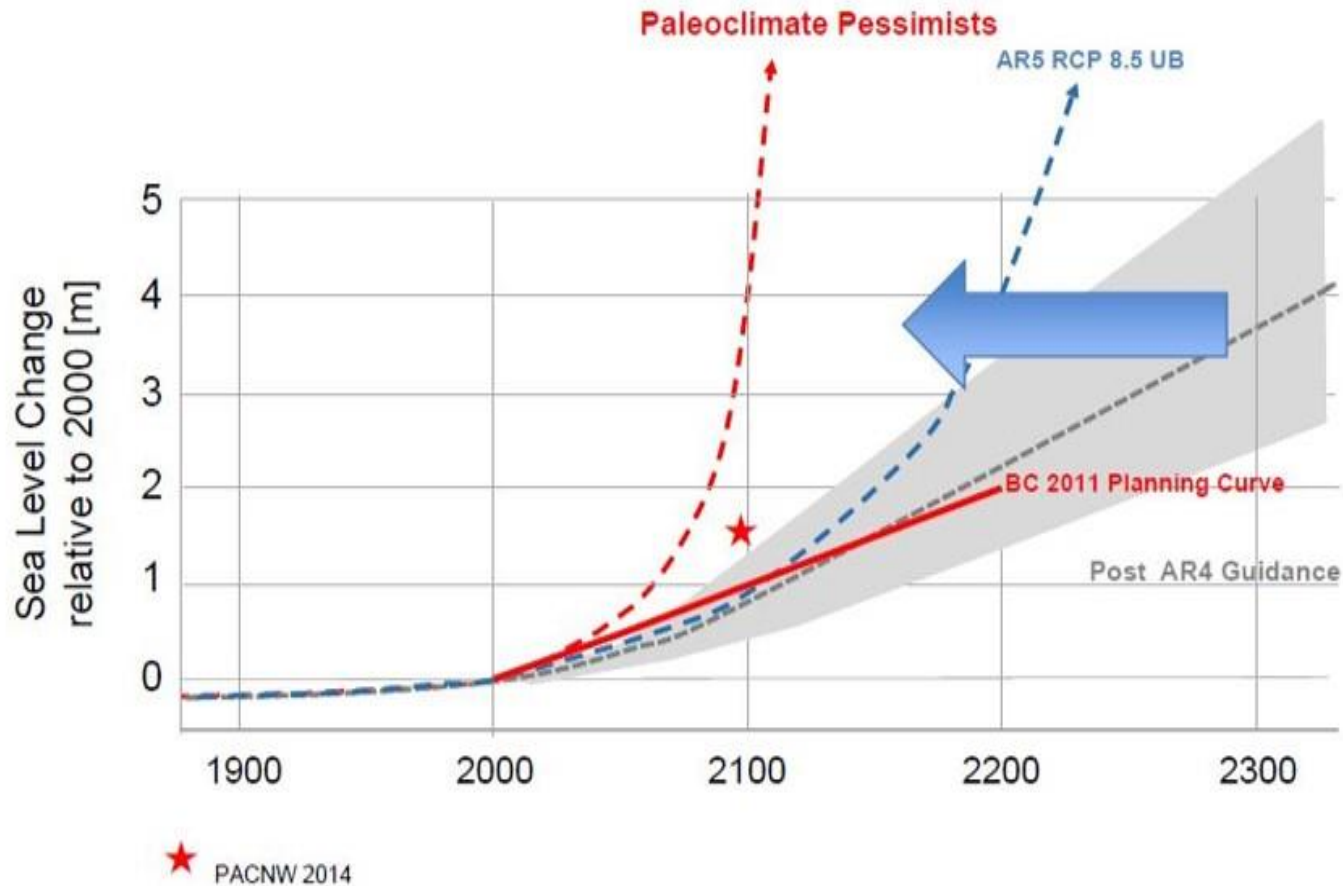


Threats to Healthy Shorelines





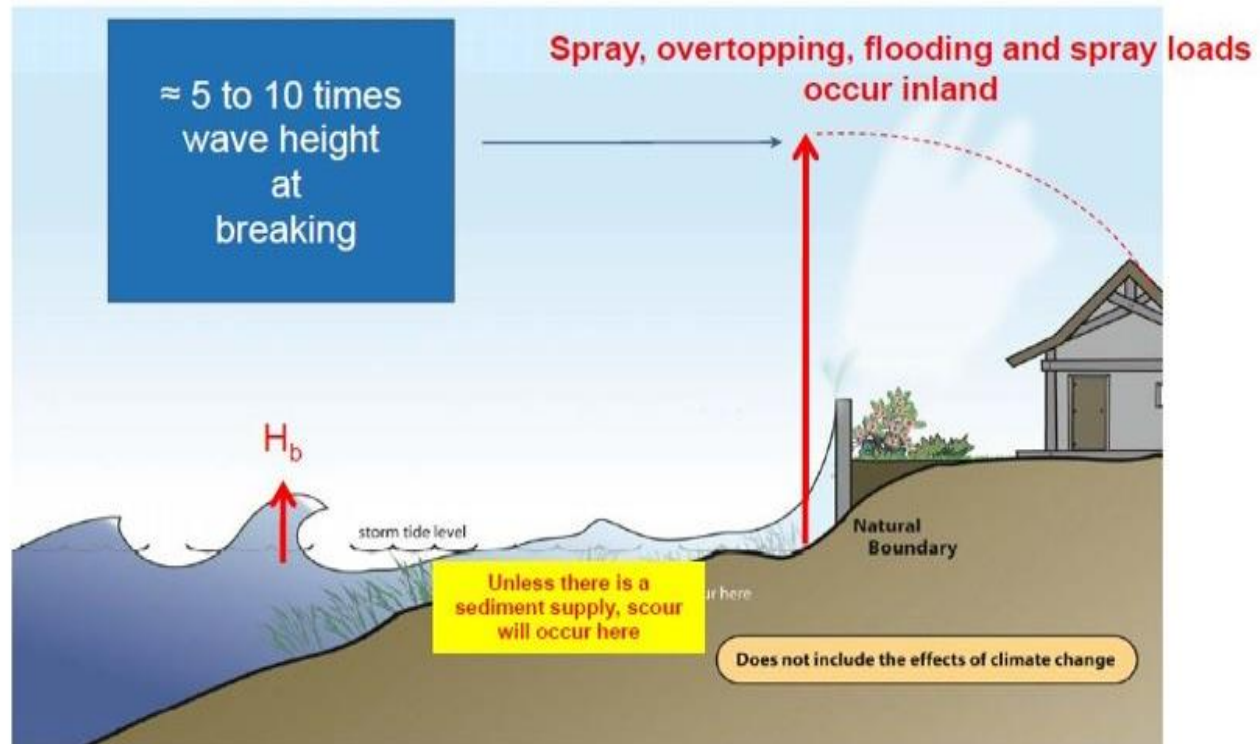
Sea Level Rise Planning





Effects of Shoreline Hardening

Sea Walls





Erosion on Hardened Shores: Ross Bay



1915 Completed Seawall with beach



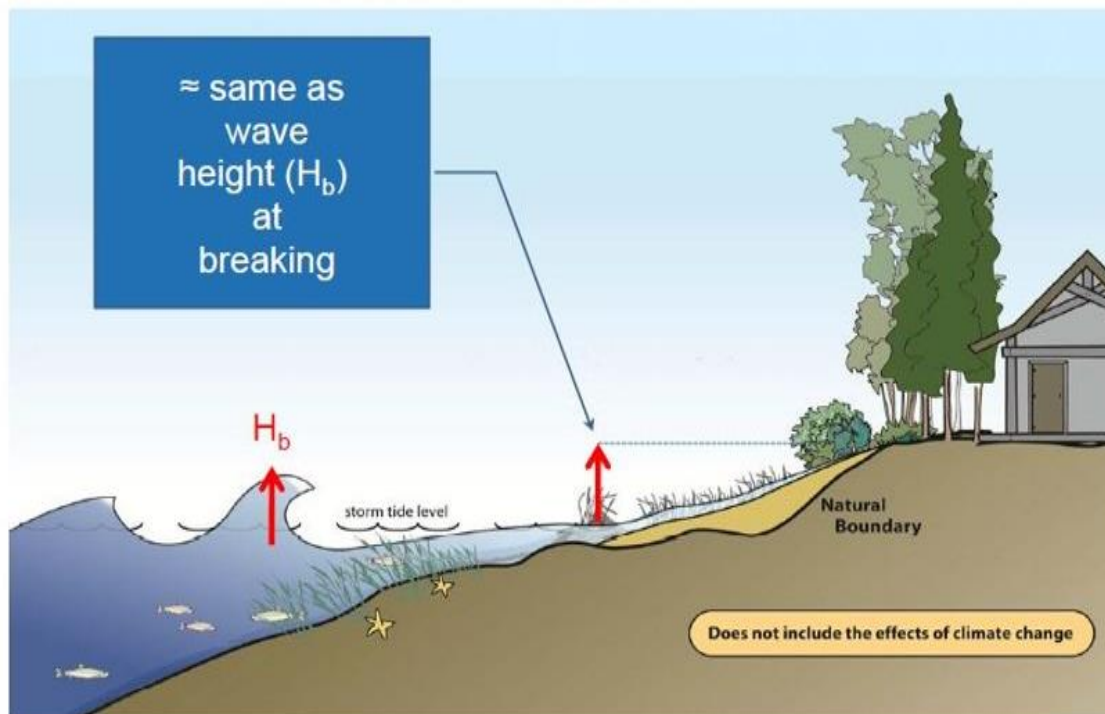
Erosion on Hardened Shores





Effects of Shoreline Hardening

Gentle Slopes - Beaches





Restoration of Hardened Shores



Ross Bay, 12 May 2009 (10 years after restoration)



What marine shoreline features and functions do you wish to protect and how do you wish for them to be protected?



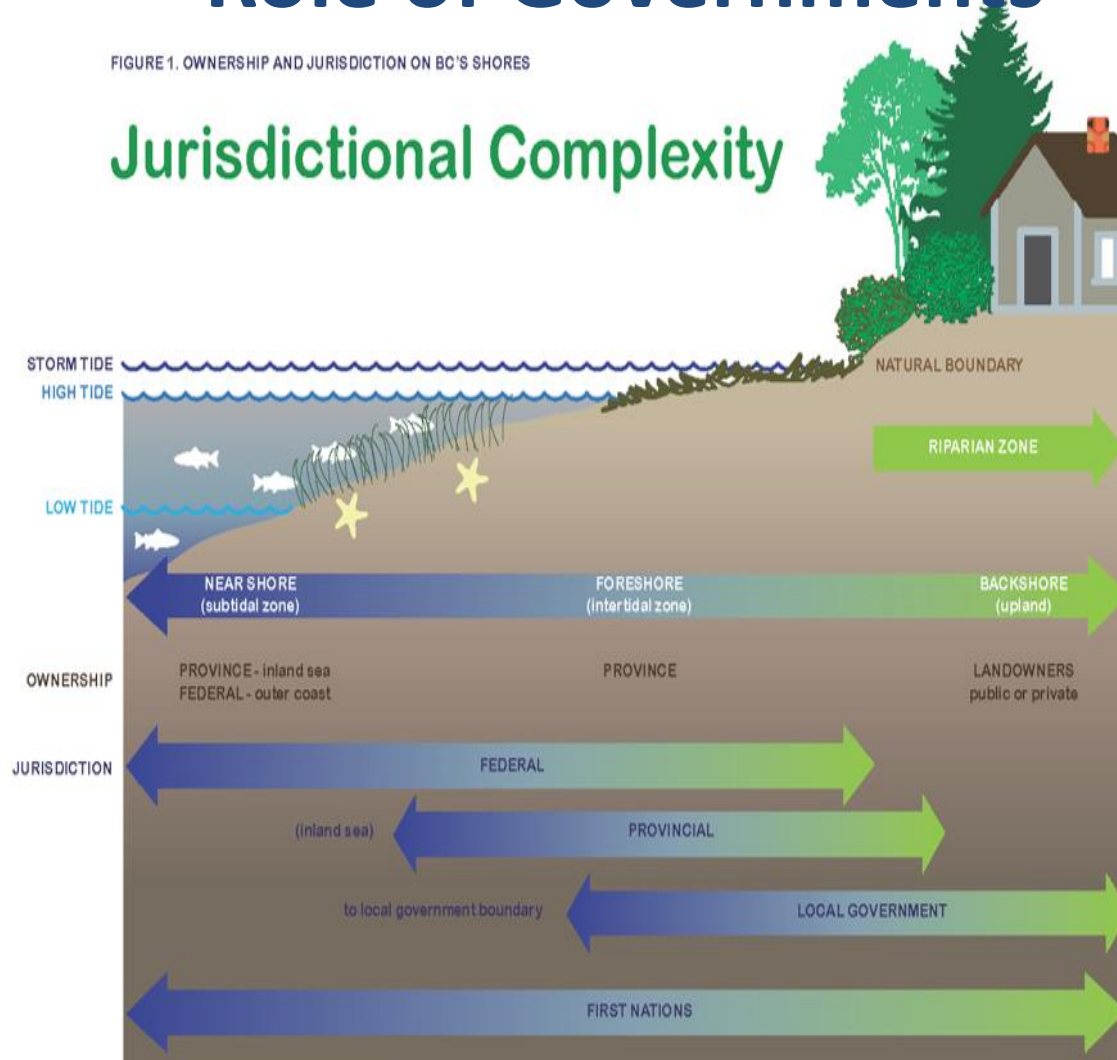
What are the options for improving existing policies and/or regulations to formally protect shorelines?



Role of Governments

FIGURE 1. OWNERSHIP AND JURISDICTION ON BC'S SHORES

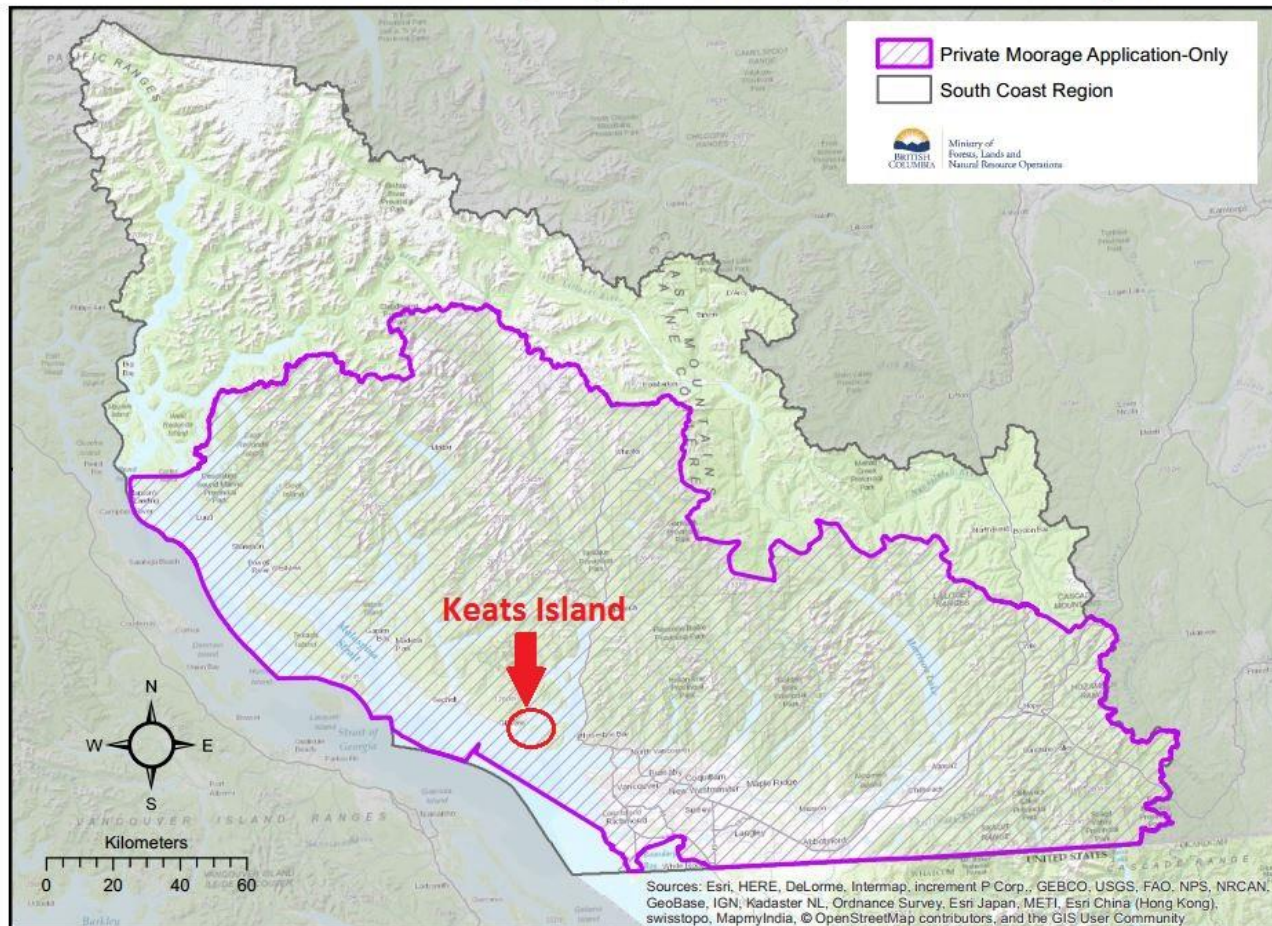
Jurisdictional Complexity

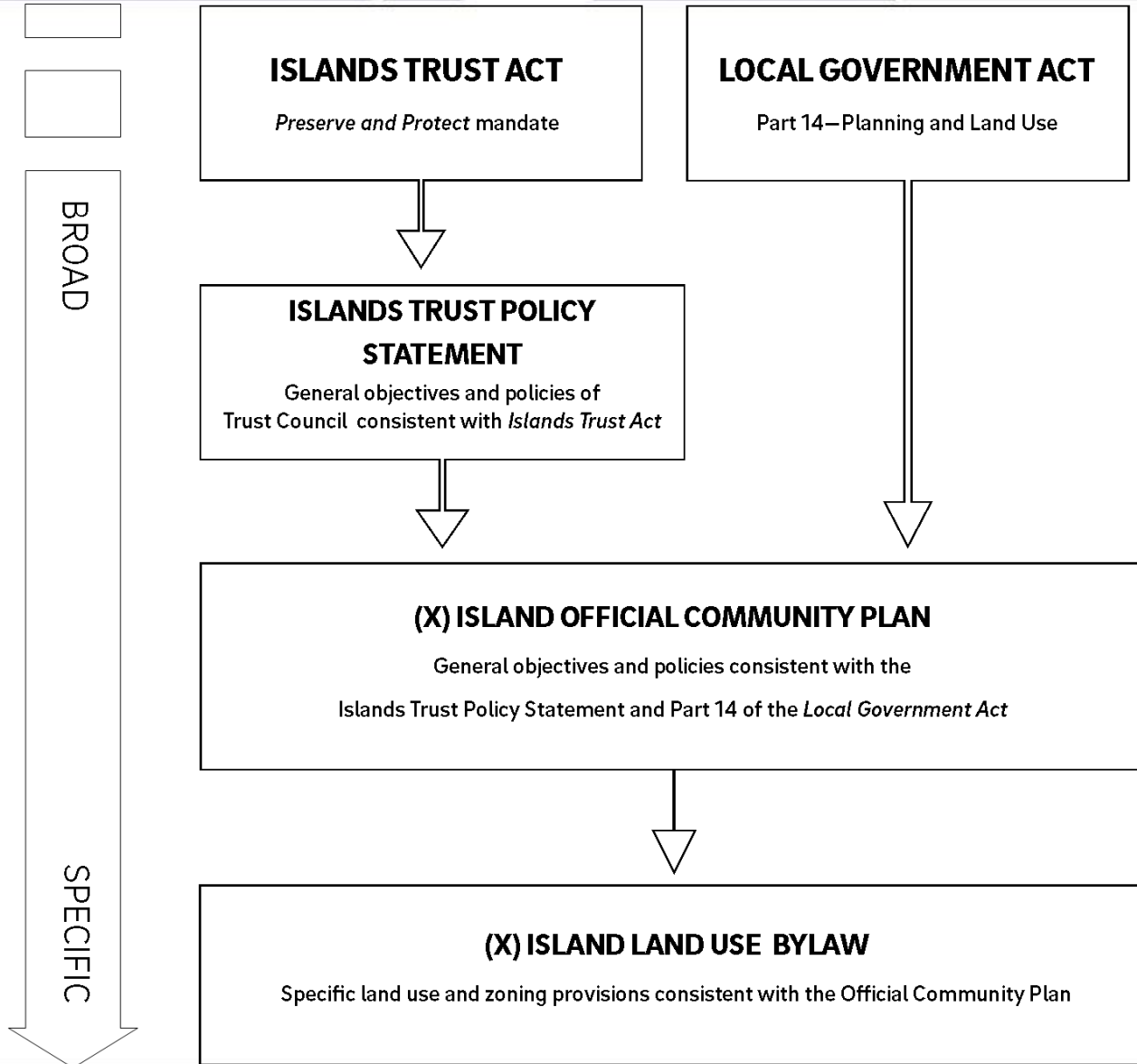




Marine Zoning Regulations

South Coast Private Moorage Application-Only Areas: January 2017







Shoreline Protection measures available to the LTC

High Level Protection

- Updated setbacks to NB of sea
- Updated subdivision regulations
- Updated dock regulations for marine zones
- New DPA, new HCA

Medium Level Protection

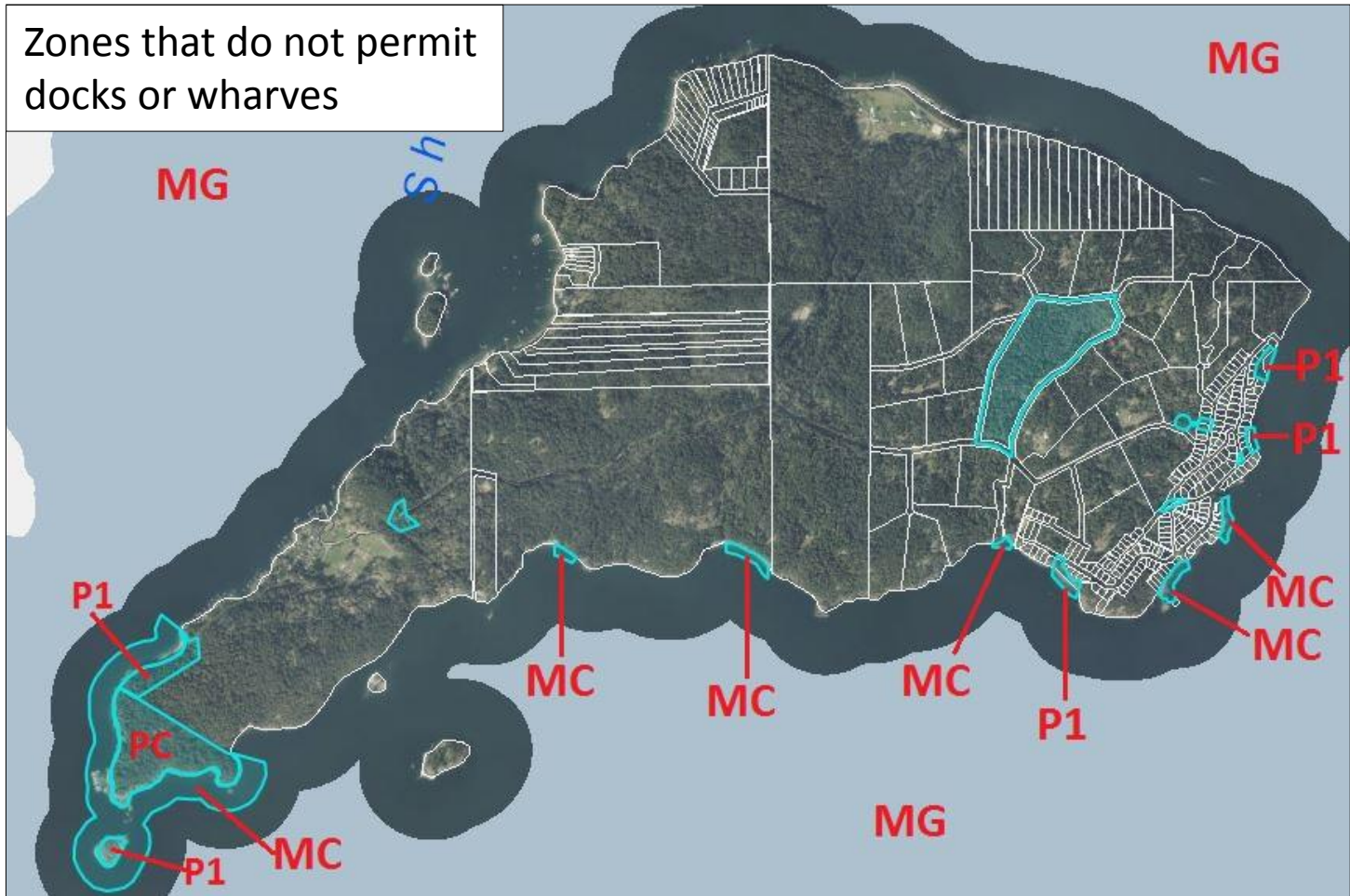
- Updated and/or new policy direction for enhanced shoreline regulations
- Justification and objectives for a new DPA for protecting the natural environment, ecosystems and biodiversity

Low Level Protection

- Advocacy
- Community Outreach
- Education
- Voluntary Stewardship

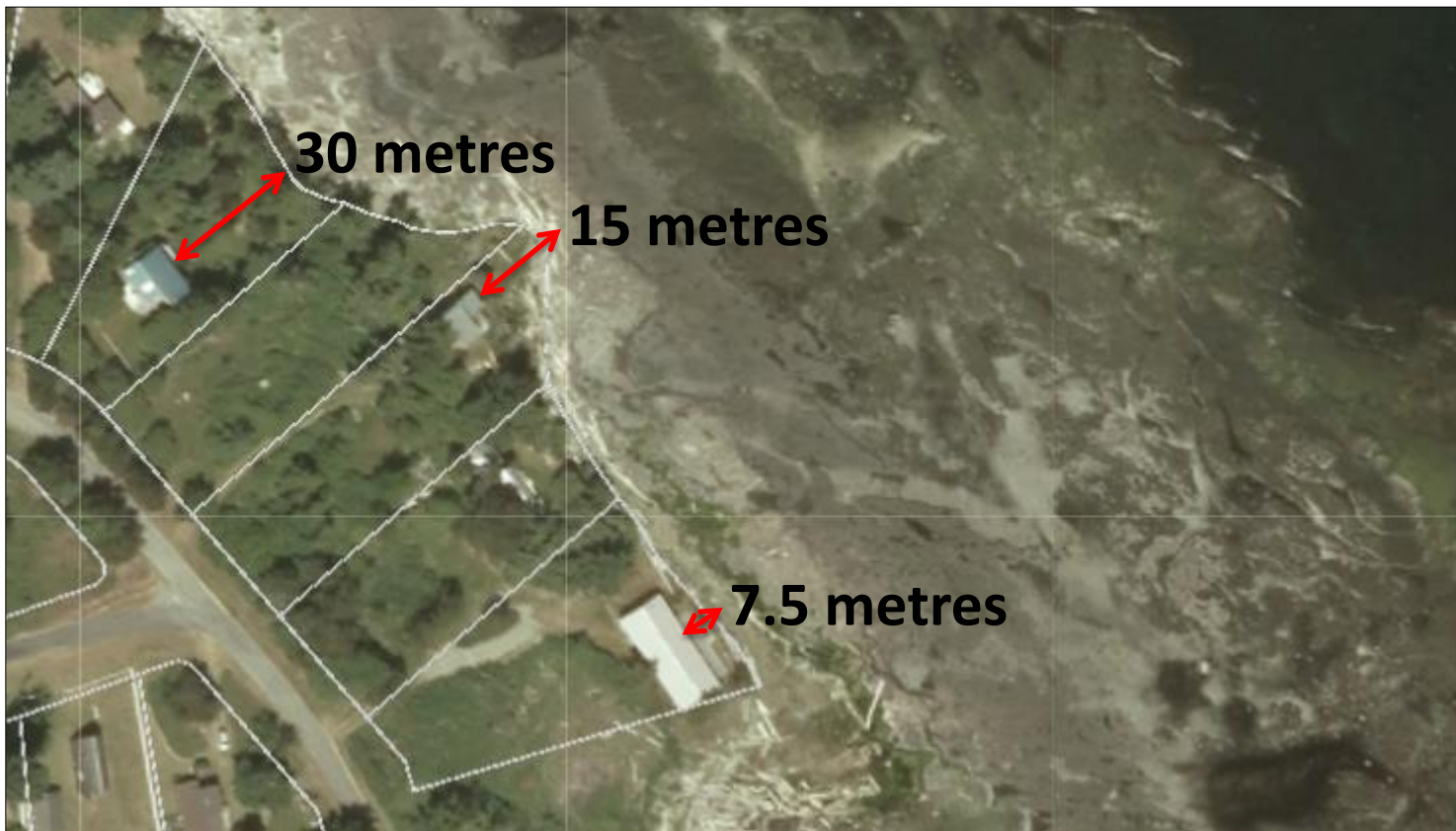


Keats Island Land Use Bylaw



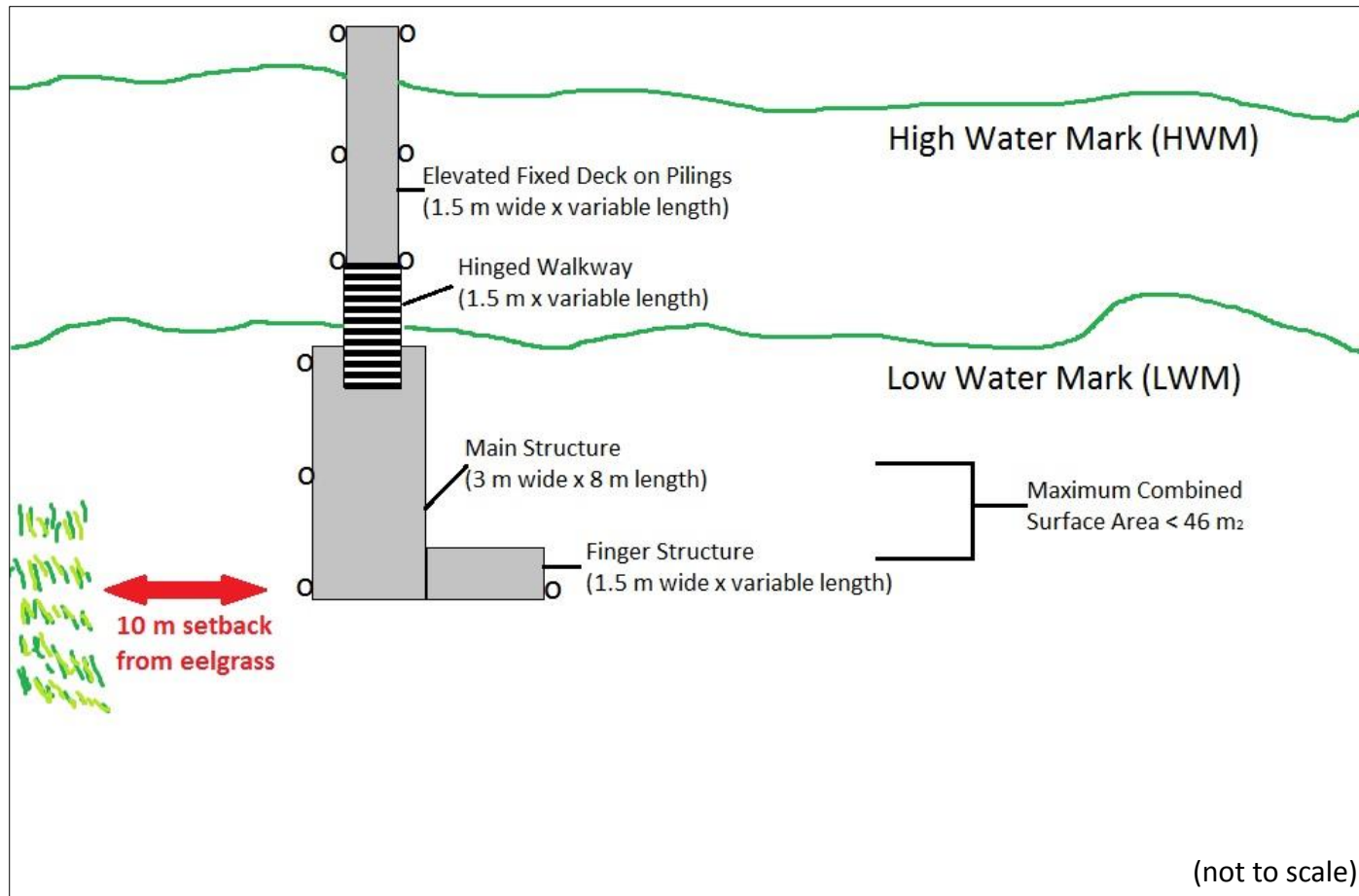


Setback Regulations to the Natural Boundary of the Sea



Projected Sea Level Changes for British Columbia in the 21st Century (2008) document:
http://www.llbc.leg.bc.ca/public/pubdocs/bcdocs/452793/sea_level_changes_08.pdf

Updated Dock Regulations for Marine Zones (example)





Gambier Island
Local Trust Committee

Development Permit Area





Heritage Conservation Areas

- Designated in OCPs
- May be used to conserve natural landscapes or undeveloped land, where:
 - Deemed necessary for the conservation of adjacent/proximate protected heritage property;
 - With respect to a site with heritage value or character related to human occupation or use; or
 - With respect to individual landmarks and other natural features that have cultural or historical value.



Gambier Island
Local Trust Committee


What are the opportunities for voluntary stewardship on Keats Island?




Gambier Island
Local Trust Committee

Voluntary Conservation Covenant

Protect your land

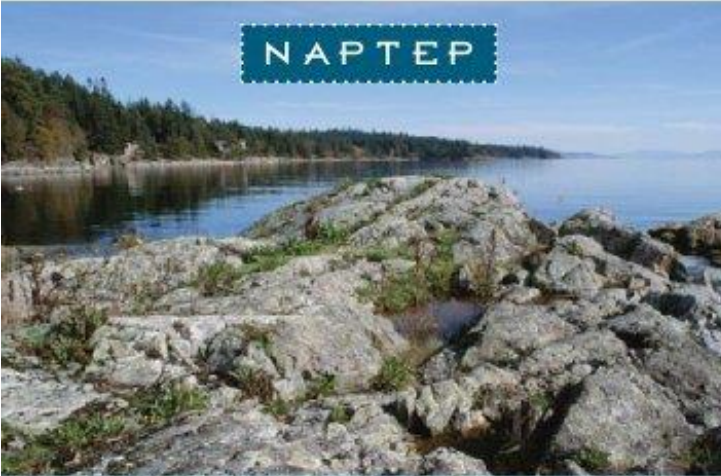



Conservation
Covenants



Islands Trust Fund
creating a legacy of special places

The Natural Area Protection Tax Exemption Program



PROTECT YOUR LAND AND SAVE MONEY

An incentive program to reduce taxes for Islands Trust Area landowners

Contact:

Nuala Murphy
A/Ecosystem Protection
Specialist, ITC
(250) 405-5176

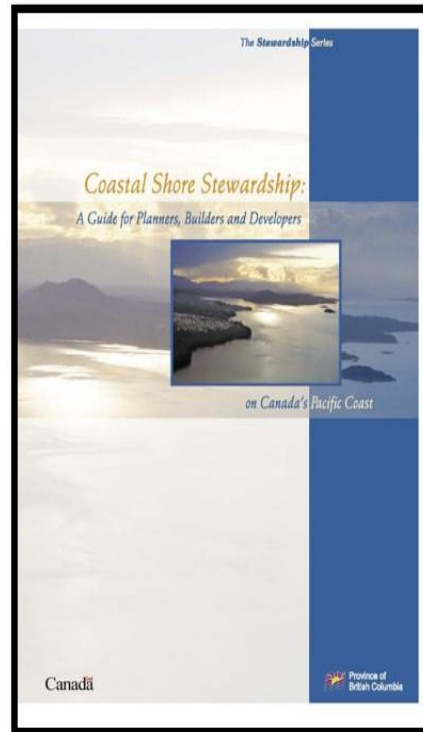
<http://www.islandstrustconservancy.ca/>



Green Shores



Green Shores for
Coastal Development
for
large-scale projects



Green Shores for Homes
for residential properties



What are the options for improving existing policy/regulations to formally protect shoreline values?

What marine shoreline values do you wish to protect?

What are the opportunities for voluntary stewardship in general on Keats Island?



**Gambier Island Local Trust Committee
Keats Island Shoreline Protection Project (Phase 1)**

Community Questionnaire Summer 2018

The Gambier Island Local Trust Committee (LTC) is seeking input from community members and stakeholders on community shoreline protection values, and policy and regulatory options for strengthening protection of marine and shoreline areas on Keats Island.

Your input during the first phase of the project is important to:

- Assist the Local Trust Committee in identifying priority community marine and shoreline values on Keats Island, and
- Inform Phase 2 of the project, which may include potential amendments to the Keats Island Official Community Plan (OCP) Bylaw No. 77 and/or the Keats Island Land Use Bylaw No. 78.

The questionnaire will take less than 10 minutes to complete and is available online. Paper copies will be distributed by mail, and at the community consultation event held at Keats Camp, Keats Island on Thursday, July 26, 2018. Paper copies can be mailed or scanned and emailed to:

Islands Trust, Northern Office
700 North Road
Gabriola Island, BC V0X 1X3
gambierplanner@islandtrust.bc.ca

For more information on the Keats Island Shoreline Protection Project, please visit the [project website](#) or contact planning staff at 250.247.2063.

Thank you for your participation!

Deadline: TBD



Questions and Comments



Thank you.